

## 18-24 JEEP WRANGLER JL TERRA SERIES FRONT BUMPER ATTJL01A106-BX



### CAUTION BEFORE INSTALLING

**Before installation** - Read and understand all instructions, warnings, cautions, and notes contained in this installation instruction guide. Consult your vehicle owner's manual for proper disconnection of electrical and lifting of vehicle if required for installation of this product.

This install may require some technical skills and knowledge of basic mechanical work. If you do not feel that you are capable of performing this install please take this product to a trained professional.

After reading this guide please contact us with any questions or concerns before installing product.  
Customer Service: (626) 369-2121

**ATTICA4X4 is not responsible for any bodily injury or harm to you or your vehicle as a result of an improper install.**

Proper installation of this kit requires knowledge of the factory recommended procedures for removal and installation of original equipment components. We recommend that the factory shop manual and any special tools needed to service your vehicle be on hand during the installation. Installation of this kit without proper knowledge of the factory recommended procedures may affect the performance of these components and the safety of the vehicle.

- **Always wear eye protection when operating power tools.** •

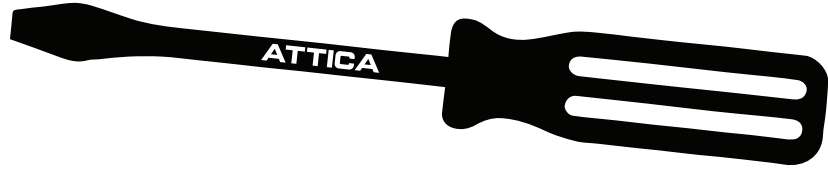
*Inspect all contents of this package to make sure product is not damaged and all installation hardware has been included. If parts are missing from kit, please be prepared to provide the following information:*

- Name of purchase location
- Date above Bar Code
- Bar Code on side of box
- Date inside box cover

# INSTALLATION **MANUAL**

## TOOLS REQUIRED

- 13MM SOCKET
- 16MM SOCKET
- 5MM HEX TOOL



## HARDWARE KIT



**X 8**  
N17 | HEX FLANGE NUT



**X 6**  
N14 | HEX FLANGE NUT



**X 8**  
W23 | WASHER



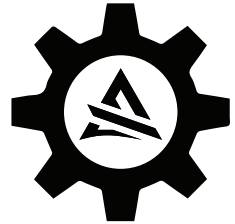
**X 8**  
SQUARE NECK BOLT



**X 6**  
B15 | HEX HEAD BOLT



**X 8**  
PLASTIC RETAINER



**X 1**  
SPARE PARTS HARDWARE KIT

# INSTALLATION MANUAL

Begin by unpacking all items and inspecting them for damage or missing items. Any concerns, please contact the company you purchased the bumper from.

After inspection, remove your factory bumper & winch.

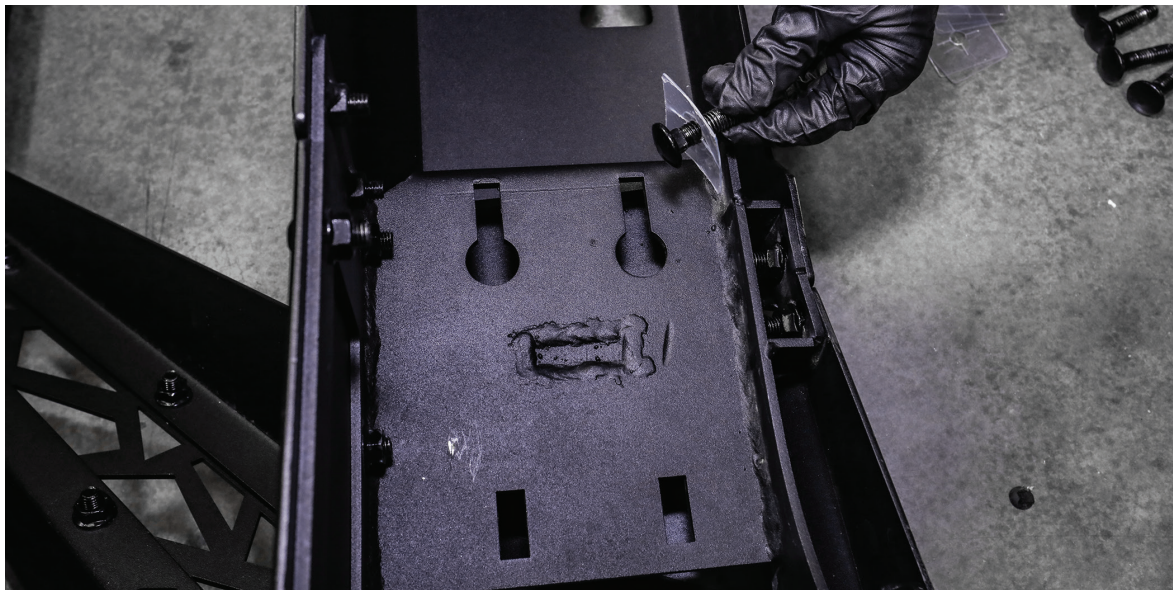


Start by installing our Jeep Terra Series bull bar into place on the main center section of the bumper.

# INSTALLATION MANUAL



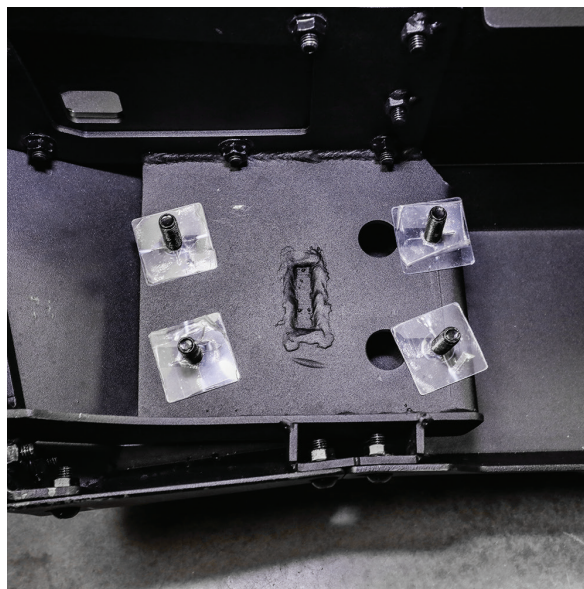
Align the mounting points of your bull bar with the top of your front bumper as shown above. After mounting to the front bumper using your **B15** bolts and securing by fastening your **N14** nuts on the underside using your **5mm hex tool** & **13mm socket tool**.



Once your bull bar is installed, flip your bumper so that the back is facing upwards, as shown above. Proceed by inserting your **square neck bolts** and **plastic retainers**.

# INSTALLATION MANUAL

After inserting your bolts and plastic retainers, the backside of your front bumper should resemble what is shown on the right for both sides of your bumper.

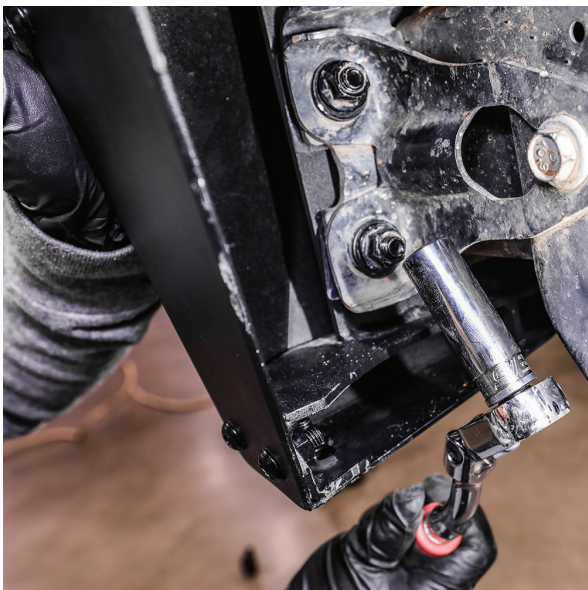


Once complete, stand your front bumper upright and proceed by installing your winch plate as shown to the left.



# INSTALLATION MANUAL

Refer to the image shown on the right to see how to mount your Terra Series Front Bumper to the frame of your Jeep using your **square neck bolts** and securing it by fastening your **W23 washers** and **N17 nuts** on the underside. Repeat this process on the other side.



Secure by fastening your **W23 washers** and **N17 nuts** as shown on the left using your **16mm socket tool**.



# INSTALLATION MANUAL

The last step is to fasten and secure your **square neck bolts** that can be accessed from under the front bumper once the steps above have been completed. Secure using your **W23** washers and **N17** nuts on the underside.

Once finished your Attica Terra Series Front Bumper will be completely installed and ready to take to the outdoors!





IF YOU HAVE ANY QUESTIONS, PLEASE EMAIL US AT [TECH@ATTICA4X4.COM](mailto:TECH@ATTICA4X4.COM) OR CALL US AT  
626-369-2121