



# Installation Instructions

Part No. **2155 V2**

Product: Running Boards

Application: **Ford Bronco 4DR 2021+**

**Ford Bronco 2DR 2021+**

**Ford Ranger 2019+**

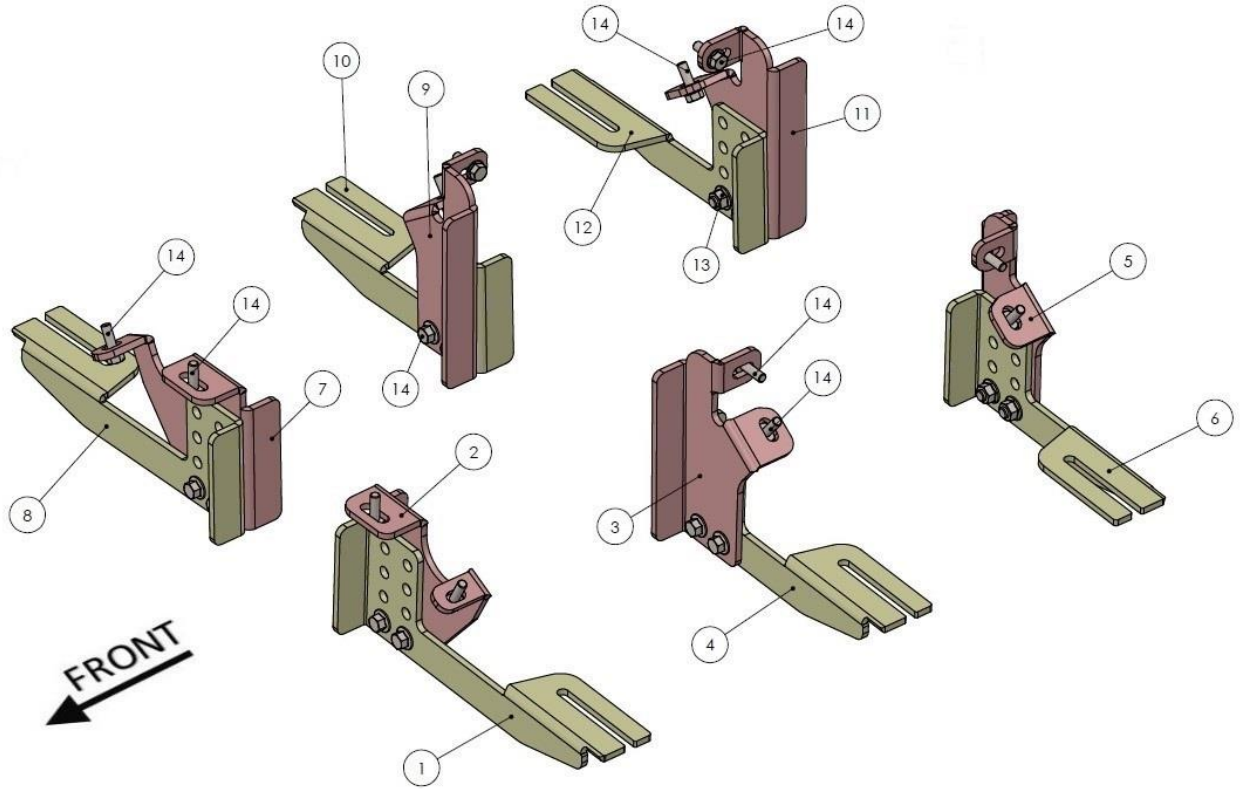
Level of Difficulty: **1 2 3 4 5**

Installation Time: 60 Min

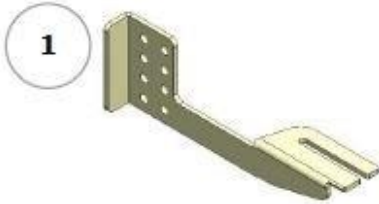
REV 5 08/01/22

Hardware	Torque Aluminum	Torque Steel to Steel
M6 Bolt	3 ft.-lbs.	14 ft.-lbs.
M8 Bolt	7 ft.-lbs.	35 ft.-lbs.
M10 Bolt	16 ft.-lbs.	64 ft.-lbs.
M12 Bolt	28 ft.-lbs.	112 ft.-lbs.

**ATTENTION:** Use correct torque settings to avoid damaging the running boards and or mounting brackets. Failure to do so will void your warranty. If you have any questions, please contact our technical team at 1-866-717-6645



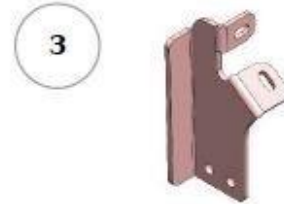
2155



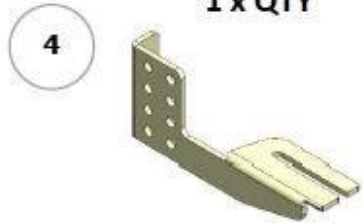
DRIVER SIDE  
FRONT BRACKET-1  
1 x QTY



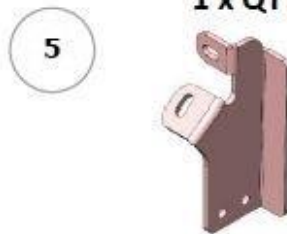
DRIVER SIDE  
FRONT BRACKET-2  
1 x QTY



DRIVER SIDE  
CENTER BRACKET-1  
1 x QTY



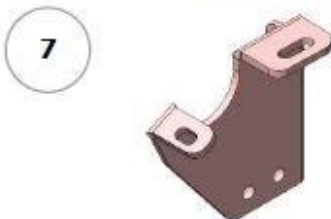
DRIVER SIDE  
CENTER BRACKET-2  
1 x QTY



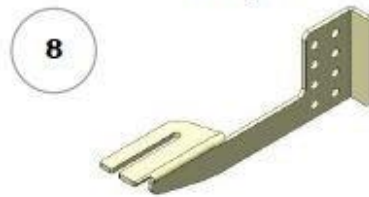
DRIVER SIDE  
REAR BRACKET-1  
1 x QTY



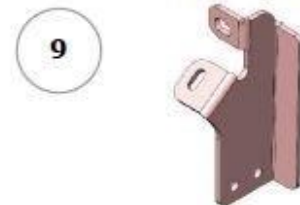
DRIVER SIDE  
REAR BRACKET-2  
1 x QTY



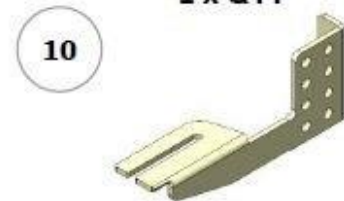
PASSENGER SIDE  
FRONT BRACKET-1  
1 x QTY



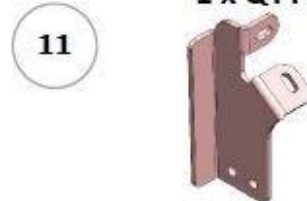
PASSENGER SIDE  
FRONT BRACKET-2  
1 x QTY



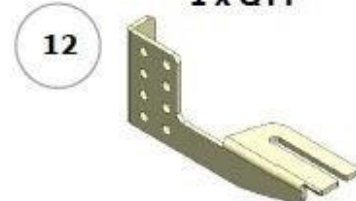
PASSENGER SIDE  
CENTER BRACKET-1  
1 x QTY



PASSENGER SIDE  
CENTER BRACKET-2  
1 x QTY



PASSENGER SIDE  
REAR BRACKET-1  
1 x QTY



PASSENGER SIDE  
REAR BRACKET-2  
1 x QTY

HARDWARE



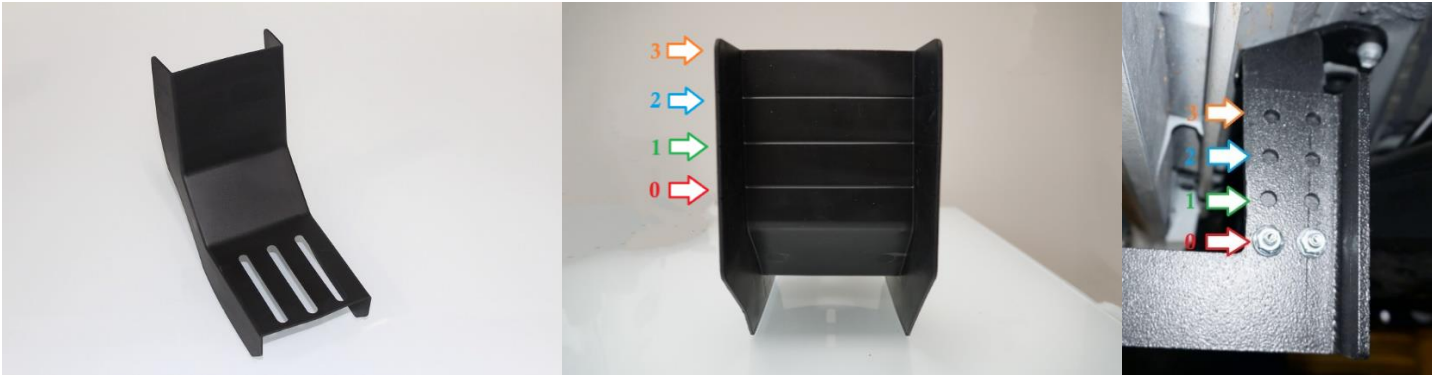
M10 HEX  
FLANGE NUT  
12x



M10x25 HEX  
FLANGE BOLT  
24X

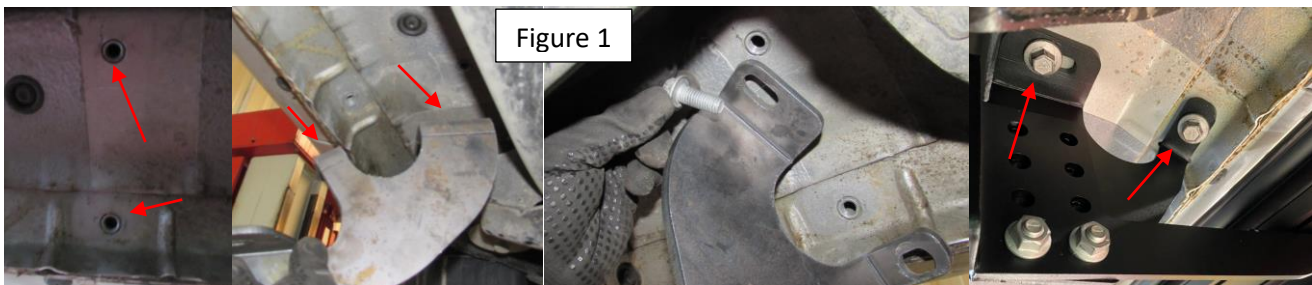
# Installation Instructions “DRP” 2155 V2 Bracket Kit

Thank you for choosing the Romik DRP System. This system allows you to adjust the brackets from 0 to 3-inch drop. If you ordered the **optional** DRP cover you can customize them to match the desired height by cutting on the lines inside the cover. Please test before cutting, in many cases you will be able to tuck the cover behind the body of the vehicle without cutting. NOTE: **Blue Loctite is recommended on all metal parts**

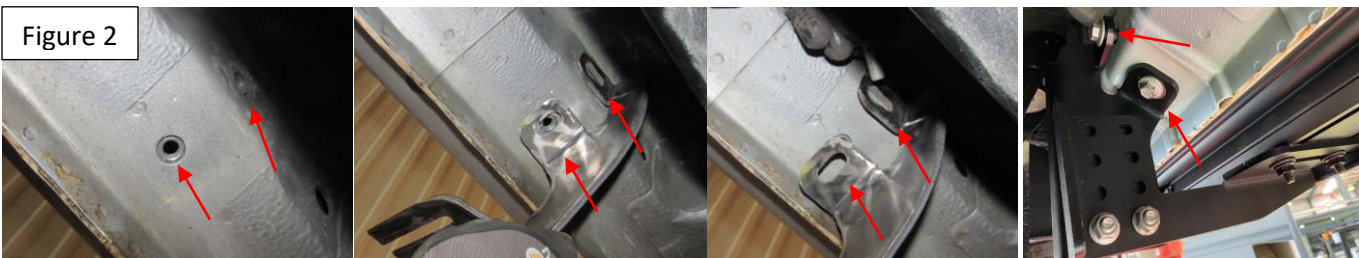


**NOTE: Bronco Models, if equipped with factory rock sliders, removal is necessary in order to install Romik running boards. 2 DR Bronco models only use 4 brackets.**

**Step 1:** Locate front mounting points Figure 1, remove factory bolts and keep them as they will be reused to install the bracket. Assemble DRP bracket and set to desired height. Install front bracket using supplied #14 hardware. Do not tighten.



**Step 2: NOTE 2 DR Bronco Skip this step** Install middle bracket using supplied #14 hardware Figure 2. Do not tighten.



# Installation Instructions “DRP” 2155 V2 Bracket Kit

**Step 3:** Install rear bracket using supplied #14 hardware Figure 3. Do not tighten.



**Step 4:** Torque #14 bolts to 64 lbs. Install DRP covers on brackets. Now proceed to last page of this manual for running board install instructions and torque values. Use of a level is recommended.

**NOTE: DRP system is designed to assist you getting in and out of the vehicle. However the lower you place the brackets the lower the weight rating. For maximum weight capacity use DRP brackets at zero.**

For Technical support please call our team at 1-866-717-6645 and one of our experts will assist you with this installation.

**Thank you for choosing Romik.**

# Installation Instructions Running Boards

**NOTE: Use of power tools will damage the bottom of the running board and void your warranty.**

**Step 1: loosen the M8 hardware on back of the running boards.**

**Step 2: Slide running board onto brackets**

**Step 3: Tighten hardware to 7 ft lbs.**



## ROF/RPD/ROB Running boards

**Step 1: Place clamping plate on top of running board as shown below.**

**Step 2: Install carriage bolts and plastic retaining clips as shown below.**

**Step 3: Install and tighten hardware to 7 ft lbs.**



## Product Registration and Warranty Information

- Register your Romik products at <https://romik.com/productregistration>
- Warranty information at <http://www.romik.com/warranty>

## Cleaning and maintaining your Romik Running boards

Cleaning and maintaining your running boards is important, apply a light coat of a quality carnauba wax at least 2X per year. Wash often with mild soap and make sure to remove all soap residue. Many car automatic carwashes use a strong soap, make sure to use enough water to remove all residue.

For video instructions on how to clean your Romik products please click here <https://romik.com/cleaning>