

Preparation:

- Disconnect the negative battery terminal. Park the vehicle on level ground and set the emergency brake.
- We recommend reading through the installation instructions in whole before performing the work.
- Estimated Installation Time: **1.5 Hours**

****This installation requires 2 people for best results****

****Labor Rates are based on a vehicle with no pre-existing damage. Wiring labor is based on a standard wiring procedure with light switches installed in an easily accessible location. Custom light triggering or switch mounting location will result in a greater labor charge.****

You will need the following tools:

- | | | |
|-----------------------------|-----------------------------|---------------------------|
| - Ratchet | - T20 Torx Socket | - T50 Torx Socket |
| - 3/16" Allen Wrench/Socket | - 5/32" Allen Wrench/Socket | - 5mm Allen Wrench/Socket |
| - 10mm Wrench | - 1/2" Wrench | - 7/16" Wrench |

Included in Kit:

- | | |
|--|---|
| 8 - Button Head Bolts (M6-1.0 x 20mm) | 8 - Flat Washers (M6) |
| 8 - Lock Nuts (M6-1.0) | 2 - Threaded Rubber Bumper (1" Long) |
| 2 - Extruded U-Nut (5/16"-18) | 8 - Flat Head Bolts (5/16"-18 x 1") |
| 8 - Flat Washers (5/16") | 8 - Lock Nuts (5/16"-18) |
| 1 - Pair of Door Latches | 2 - Limiting Straps |
| 2 - Door Latch Spacers | 4 - Door Hinge Spacers |

Removal:

1. Open the front door and remove the kick panel shown in (Fig A). There are no tools required for this step, it simply pulls off by hand.

Before

After



2. Unplug the connector shown in (Fig B).



3. Unhook the door limiting strap. (Fig C) **Do not let the door swing forward with this strap unhooked.**



Fig C

4. Use a T20 Torx Socket to remove the bolt referenced in (Fig D).



Fig D



5. Use a T50 Torx Socket to remove the main door hinge bolts. (Fig E) Then, lift up on the door and remove it from the vehicle. **Save these bolts for reuse.**



Installation:

6. If you purchased hinges, set them in place on the doors. Make sure to mount the hinge spacers between the hinge and the door. Use the supplied 5/16" Flathead Bolts (2 per hinge), 5/16" Washers (2 per hinge), and 5/16" Lock Nuts (2 per hinge). Torque these bolts to 13 foot pounds. (Fig F)

Install the hinges in the following positions:

Driver Upper - 68302125AB

Driver Lower - 68297681AB

Passenger Upper - 68302124AB

Passenger Lower - 68297680AB

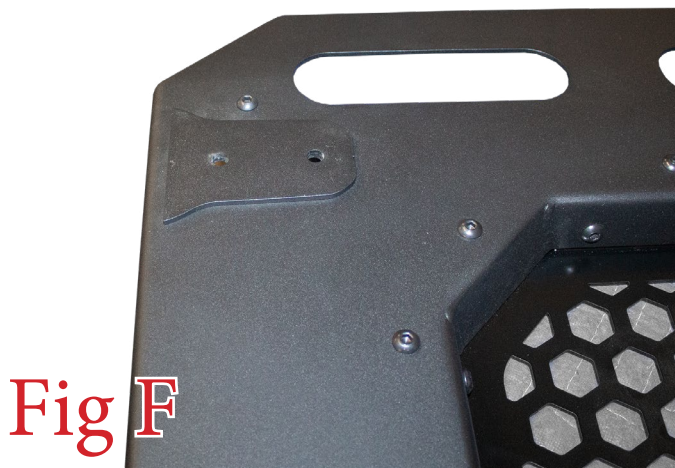


Fig F



7. Install the supplied 5/16" U-Nut (1 per door) onto the door as shown in (Fig G). Then, install the supplied Rubber Bumper (1 per door) into the newly installed U-Nut.



Fig G



8. Install the supplied latch. Use the supplied M6 Bolts (4 per door), M6 Washers (4 per door) and M6 Lock Nuts (4 per door). The latches are side specific, install them in the position shown in (Fig H). **Also, make sure to mount the supplied latch spacer between the latch and the door.**



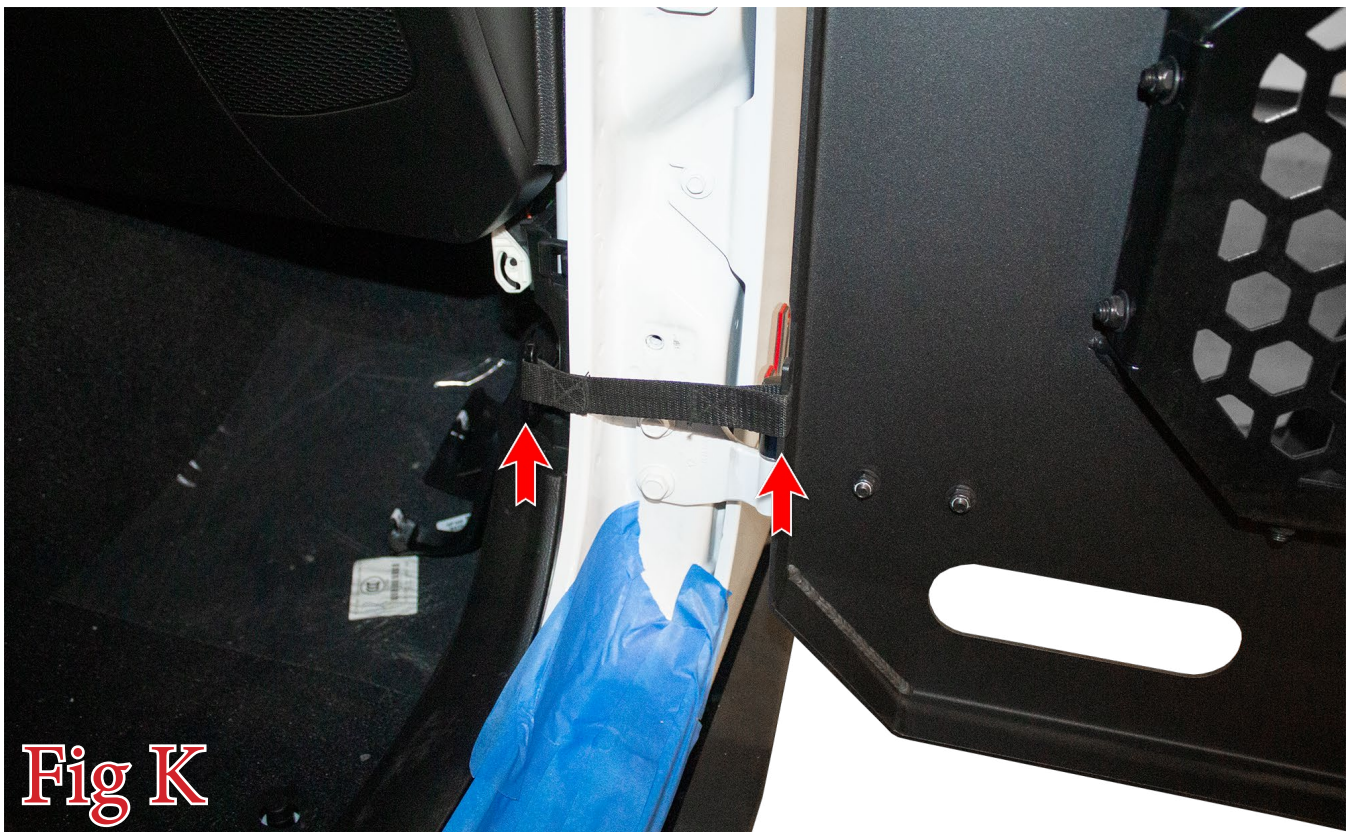
9. If you have a set of mirrors to bolt onto your doors, now is a good time to do so. Please use the hardware that comes with the mirrors to bolt them to the doors as shown in (Fig I).



10. Set the doors in place on the vehicle. Then, use the OEM Bolts that were set aside in Step 5 to secure the doors to the vehicle. (Fig J)



11. Install the supplied limit strap onto the hook on the door and the hook inside the Jeep (from Step 3), then reinstall the kick panel from Step 1. (Fig K)



12. If the latch on your new door does not line up properly with hook in the doorway of the Jeep, then loosen the hinge mounting bolts (4 per door), adjust the door's position, and re-tighten those bolts. (Fig L)



- 13. Stand back and enjoy your new ADD Stealth Fighter™ Front Doors.
- 14. Check and re-tighten, if needed, all mounting bolts after 100 miles and periodically thereafter.

