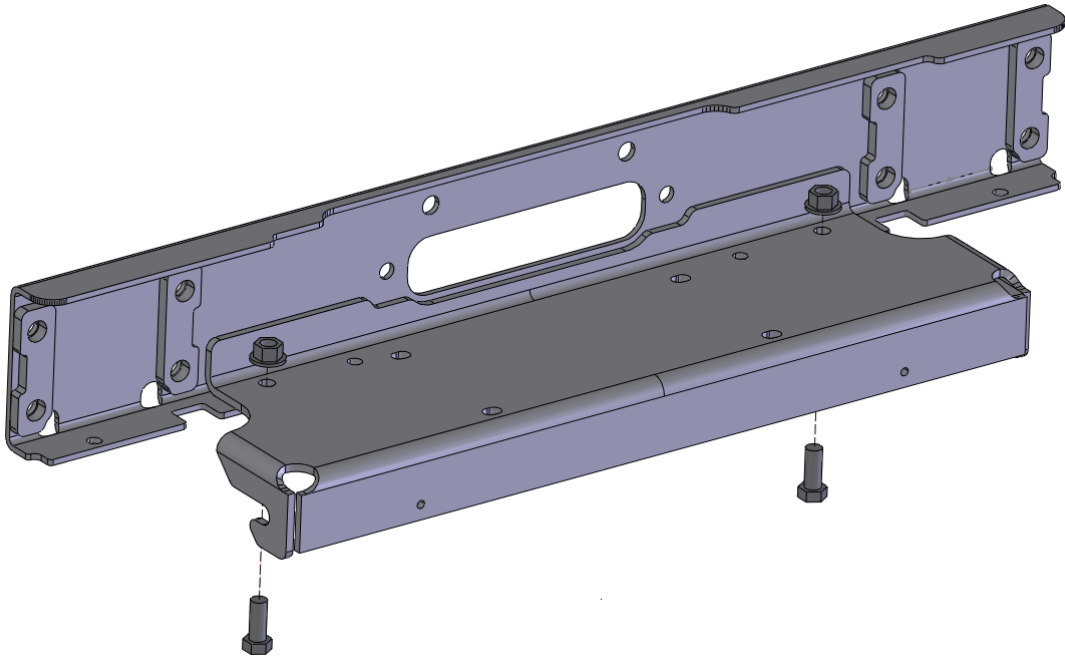




AMERICAN EXPEDITION
VEHICLES

CALL OF DUTY JK WINCH MOUNT



Installation Guide

(Updated 10/25/2011)

AEV30114AA



PLEASE READ BEFORE YOU START

IN ORDER TO INSTALL THIS PART PROPERLY YOU OR YOUR INSTALLER MUST READ THESE INSTRUCTIONS THOROUGHLY BEFORE BEGINNING THE INSTALLATION. FAILURE TO DO SO MAY RESULT IN MISTAKES AND AFFECT THE QUALITY OF THE FINISHED PRODUCT.

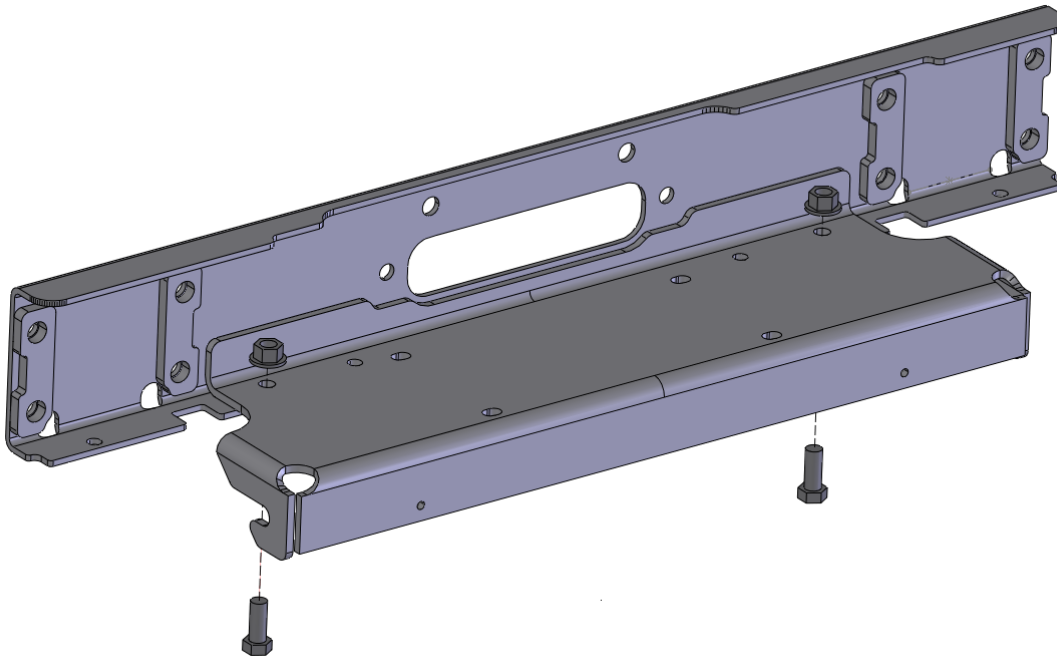
Included Parts	QTY	Required Tools
Winch Plate	1	Common Hand Tools
Hardware Pack	1	
Winch mount addendum kit		
Fairlead Plate	1	



CALL OF DUTY WINCH MOUNT INSTALLATION

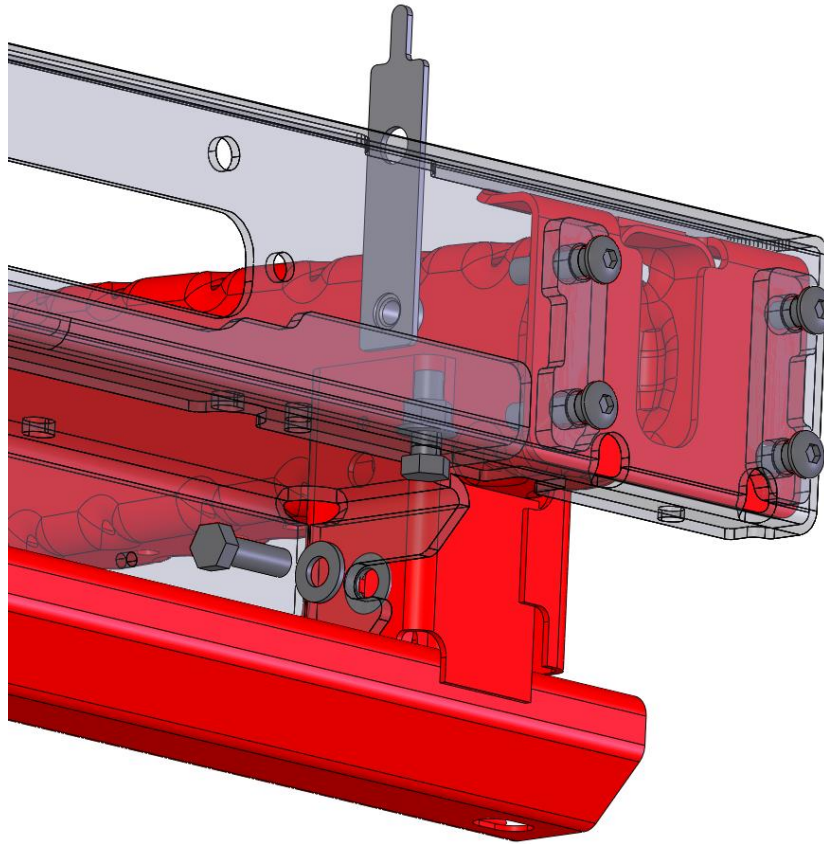
NOTE: THE FOLLOWING INSTRUCTIONS ARE FOR INSTALLING THE WINCH MOUNT KIT ON A CALL OF DUTY VEHICLE WITH THE HEAVY DUTY STEEL OFF ROAD BUMPER ALREADY INSTALLED

1. You will need to remove the skid plate and front bumper from the vehicle prior to installing the winch mount. Save all hardware except where noted.
2. Start by removing the skid plate. Discard the 6 u-nuts and 6 front bolts
3. Disconnect the fog lamp wiring from the lamps and remove the 2 bolts at each side of the bottom of the bumper. The fog lamp and bracket can be removed as one assembly.
4. Remove the (4) M10 bolts on the backside of the bumper, which attach the bumper to the closeout brackets
5. While a helper holds the bumper in place remove the main (8) button head bolts.
6. Remove bumper from vehicle and place on a paint-friendly work surface.
7. Remove the top winch delete cover plate and discard
8. Remove the front winch fairlead block off plate and discard
9. Remove the large spacer plates from the main mounting bolts. Discard spacer plates.
10. Assemble the new winch plate and fairlead bracket together using 1/2" x 1 1/2" hex head bolts and flange nuts (washers not needed) as shown. The bolts should go in from the bottom up





11. Place the winch mount assembly into position on the frame
12. Insert the (8) button head bolts through the front mounting holes to align
13. With the winch mount aligned, bolt the winch mount to the lower frame attachment points using 1/2" x 1 1/2" hex head bolts, washers, and nut plate as shown below
14. **NOTE: REFER TO THE 2012 WINCH MOUNT ADDENDUM FOR VACUUM PUMP BRACKET RELOCATION.**



15. Remove the (8) button head bolts
16. Install the square nuts that come with the Warn winch into the winch and feet. A little silicone is helpful to hold them in place
17. Place the winch onto the winch mount. Do not install winch mounting bolts at this time
18. Re-install the bumper (download complete bumper instructions at aev-conversions.com)
19. **NOTE: REMEMBER TO USE THE SHORT BUTTON HEAD BOLT AND PLAIN NUT SUPPLIED IN THE SUPPLEMENT KIT IN THE RIGHT (PASSENGER) SIDE UPPER MOST INNER LOCATION WHEN RE-INSTALLING THE BUMPER. USING A LONG BOLT HERE WOULD INTERFERE WITH THE WINCH MOTOR**
20. Re-install skid plate using the supplied self-tapping bolts in the front 6 locations



A M E R I C A N E X P E D I T I O N
V E H I C L E S

COMMENTS OR QUESTIONS?

Be sure to visit our forum at: <http://forum.aev-conversions.com>

American Expedition Vehicles

Phone: 406.251.2100

Email: tech@aev-conversions.com

Website: <http://www.aev-conversions.com>