



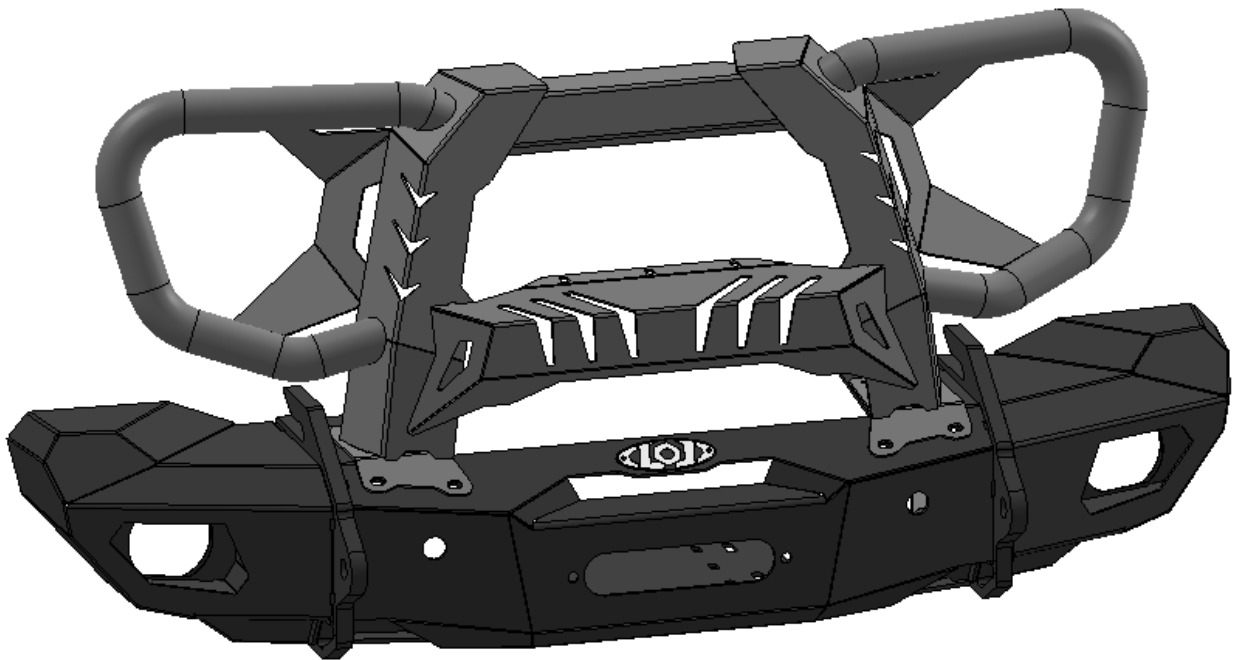
BLACK-OPS SERIES

JK/JL/JT

JEEP JK / JL / JT
FRONT FULL GUARD

VERIFY YOU HAVE ALL THE COMPONENTS BEFORE STARTING THE INSTALLATION. REFER TO THE ENGINEERING DRAWINGS AT THE END OF THIS DOCUMENT FOR A COMPLETE PARTS LIST

Install the Front Guard as shown using the $\text{Ø}3/8''$ Button Head Screws, Washers and Nuts provided.

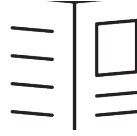




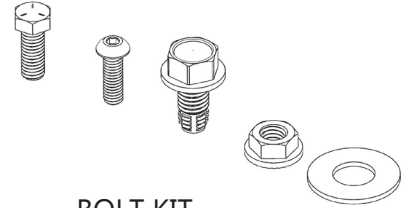
**Jeep JK/JL/JT
BLACK-OPS SERIES
FRONT GUARD
SHIPPING SHEET**

Packaged by:

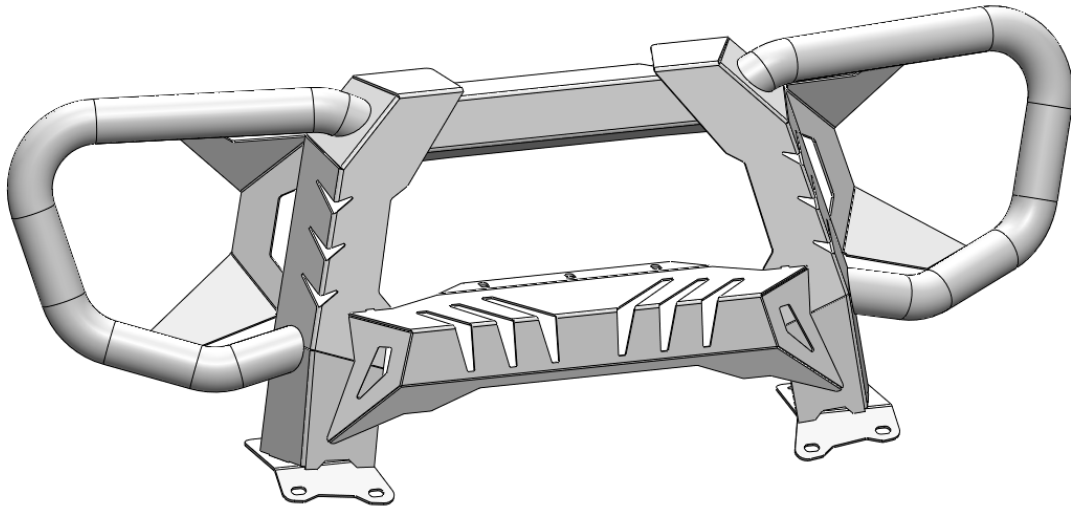
On:



INSTRUCTION
SHEET



BOLT KIT



JEEP JK/JL/JT
FRONT GUARD
4JFG1880-01
(x1)





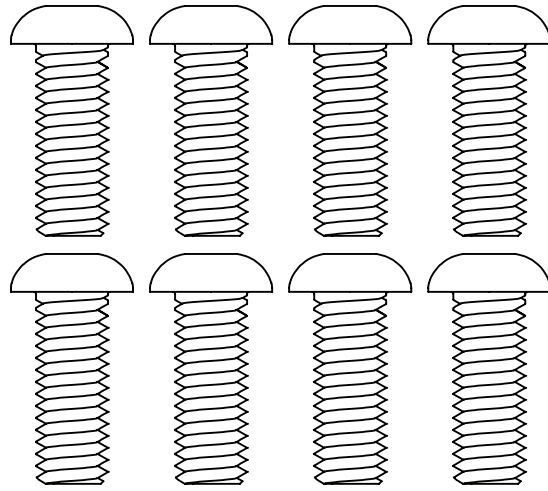
**Jeep JK/JL/JT
BLACK-OPS SERIES**

FRONT GUARD

Bolt Kit

Packaged by:

On:



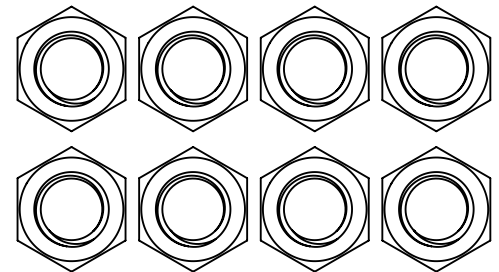
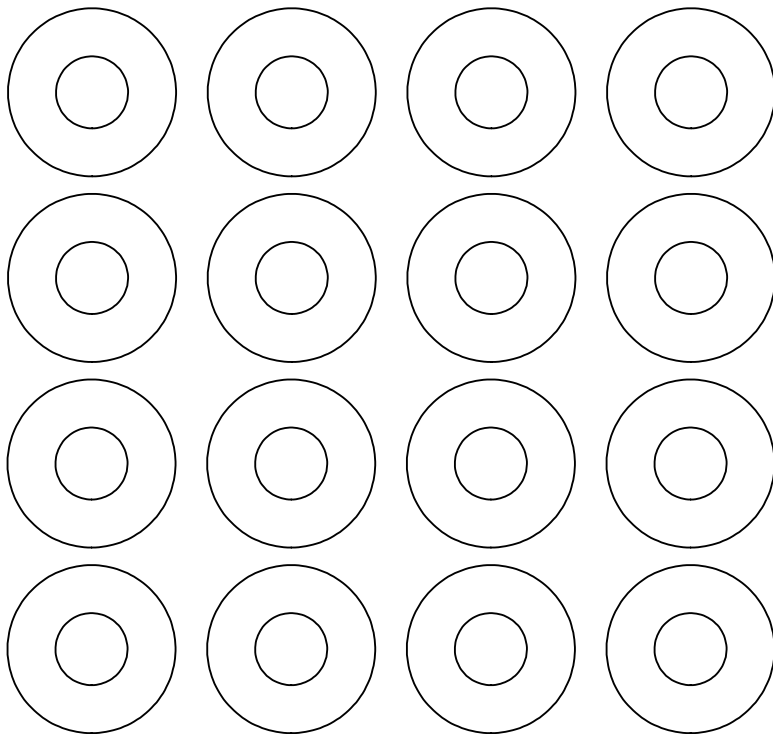
BUTTON HEAD SCREW

3/8-16 X 1.00" LG

(94092)



(x8)



HEX NUT 3/8-16

(36306)

(x8)



FLAT WASHER

Ø5/16" X .875"

(0159678)

(x16)

