

Quadratec Seat Slider - CJ / Wrangler 1976-1995

Part Number :24210-2005

VEHICLE APPLICATION:

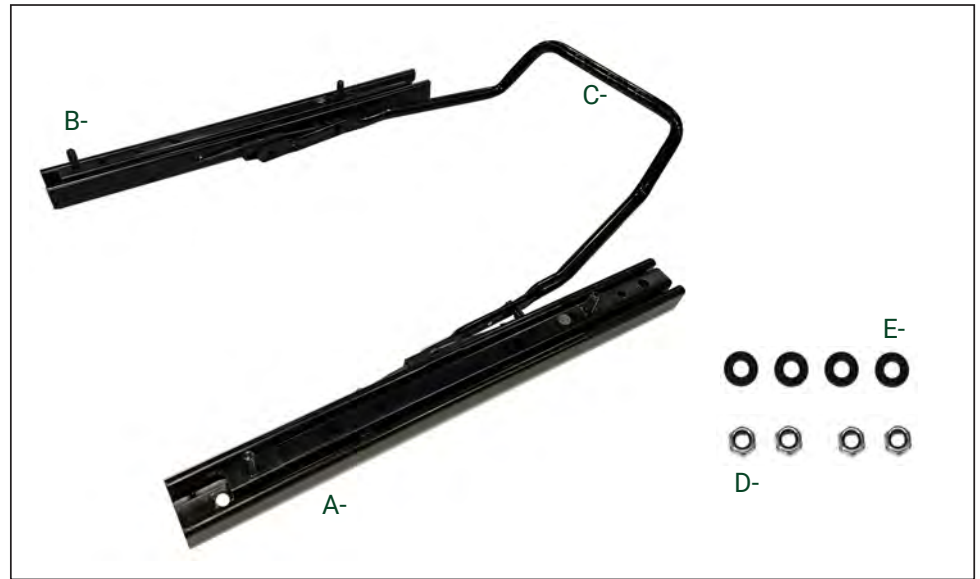
- CJ5 , CJ7, CJ8, Wrangler 76-95

KIT CONTENT LIST:

- A. Seat Slider Rail - LH
- B. Seat Slider Rail - RH
- C. Slider Pull Bar
- D. (4) M8 Nylock Nuts
- E. (4) M8 Flat washers

REQUIRED TOOLS:

- Safety Glasses
- 3/8" Drive Ratchet
- 9/16" Hex Socket
- 13mm Hex Socket
- 13mm Box End Wrench
- T-40 Torx Socket
- T-30 Torx Socket
- 3/8" Torque Wrench
- Penetration Oil



NOTICE

QUADRATEC SEAT SLIDER HAS BEEN DESIGNED TO WORK WITH REPLACEMENT SEAT RISERS. IF YOUR ORIGINAL RISER HAS WELDED NUTS TO ATTACH SLIDERS THE QUADRATEC REPLACEMENT SLIDERS WILL NOT WORK. NEW RISERS CAN BE PURCHASED SEPERATLY. P/N: 24210 - 2006 & 24210-2007

NOTICE

SEAT SLIDER HAS BEEN DESIGNED TO WORK WITH QUADRATEC HERITAGE REPLACEMENT FRONT SEATS. IF ANOTHER BRAND OF SEATS ARE USED IT IS PURCHASER'S RESPONSIBILITY TO CONFIRM FITMENT PRIOR TO INSTALLATION.

⚠ WARNING ⚠

TO REDUCE RISK OF SERIOUS INJURY OR PROPERTY DAMAGE: READ ALL SAFETY MESSAGES AND UNDERSTAND ALL INSTRUCTIONS AND PROCEDURE NOTICES BEFORE ATTEMPTING TO INSTALL OR USE THIS PRODUCT.

⚠ CAUTION ⚠

RISK OF EYE INJURY! SAFETY GLASSES MUST BE WORN AT ALL TIMES WHILE INSTALLING OR MAINTAINING THIS PRODUCT. TORQUE AND RECHECK FASTENERS AFTER 250 MILES AND FREQUENTLY THEREAFTER. DO NOT USE IF DAMAGED.

A FEW WORDS ABOUT PRODUCT SAFETY:

Your Quadratec Seat Slider is intended to enhance the utility and enjoyment of your off-road capable vehicle. Follow safety information and installation recommendations. Throughout these instructions is important safety information that is generally preceded by one of three signal words indicating the relative risk of injury, property damage or adverse consequence.

The signal words mean:

⚠ WARNING ⚠

A HAZARDOUS SITUATION WHICH, IF NOT AVOIDED, COULD RESULT IN DEATH OR SERIOUS INJURY. YOU CAN BE KILLED OR SERIOUSLY HURT IF YOU DON'T FOLLOW INSTRUCTIONS.

⚠ CAUTION ⚠

A HAZARDOUS SITUATION WHICH, IF NOT AVOIDED, COULD RESULT IN A MINOR OR MODERATE INJURY. YOU CAN BE MODERATELY HURT AND ALSO MAY SUFFER PROPERTY DAMAGE IF YOU DON'T FOLLOW INSTRUCTIONS.

NOTICE

CAREFUL ATTENTION IS REQUIRED TO THIS INSTRUCTION OR OPERATION BUT DOES GENERALLY NOT RELATE TO PERSONAL INJURY. DAMAGE TO YOUR QUADRATEC® PRODUCT OR OTHER PROPERTY MAY RESULT IF YOU DON'T FOLLOW INSTRUCTIONS.

⚠ CAUTION ⚠

READ ALL SAFETY MESSAGES AND ALWAYS WEAR SAFETY GLASSES WHEN WORKING WITH TOOLS.

Quadratec

BEFORE YOU BEGIN INSTALLATION:

Congratulations on your purchase of Quadratec® Seat Slider for your Jeep® Wrangler. When unpacking, check to make sure all parts are included and not damaged due to shipping. If any part is missing or broken, please call Customer Service at 800-745-6037 as soon as possible. Thank you again for your purchase now let's start the installation process!

⚠️ WARNING ⚠️

SEAT SLIDERS ARE DESIGNED TO WORK ON MODEL VEHICLES DISCRIBED. USE OF SEAT ADAPTERS ON ANY OTHER VEHICLE OR FAILURE TO INSTALL PROPERLY MAY RESULT IN MOVEMENT OF SEATS AND LOSS OF VEHICLE CONTROL PLACING OCCUPANTS IN A POTENTIALLY DANGEROUS SITUATION.

⚠️ WARNING ⚠️

SEAT SLIDERS HAVE BEEN DESIGNED TO BE USED WITH SEAT BELTS AT ALL TIMES. DO NOT RELY ON THE SEAT TO MAINTAIN THE SEATING POSITION OF OCCUPANTS, IN THE EVENT OF AN ACCIDENT.

⚠️ CAUTION ⚠️

BEFORE BEGINNING THE SEAT INSTALLATION, SET PARKING BRAKE, PLACE VEHICLE IN GEAR (PARK) AND PLACE CHOCK BEHIND WHEELS TO REDUCE RISK OF VEHICLE MOVEMENT. WHICH COULD RESULT IN SERIOUS INJURY.

⚠️ CAUTION ⚠️

SEATS, SEAT ADAPTORS, SLIDERS AND RISERS MAY HAVE SHARP EDGES. EXTREME CAUTION SHOULD BE TAKEN TO AVOID INJURY.

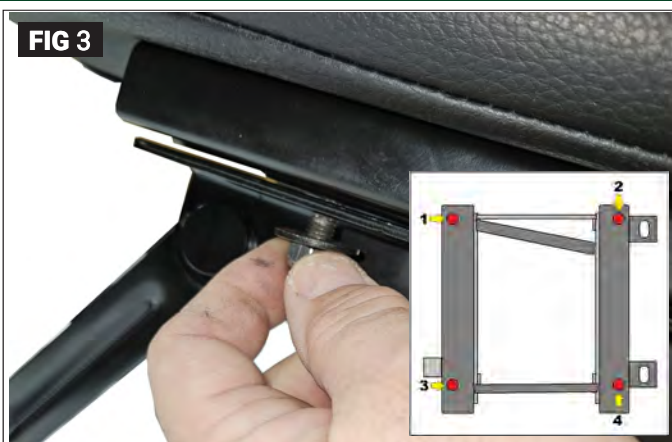
Step 1



If Original riser has welded on nuts the Quadratec Seat Sliders cannot be used. New seat risers will be required. (Fig 1) Quadratec Seat Riser P/N: 24210-2006 & 24210-2007. If equipped with removable nuts proceed as instructed.

Put on safety glasses. Apply penetration oil to the four (4) seat riser mounting bolts and four (4) seat slider nuts. Remove four (4) 9/16" bolts securing seat, seat riser to vehicle. Inspect threads. If in good condition do not discard. They will be reused to install new riser and seat. If bad replace with equivalent grade hardware. (Fig 2)

Step 2



Remove four (4) nuts mounting the seat track slide to the seat riser. Nuts are located under the ledge on seat riser. (Fig 3) Remove the seat and track slide from riser. If original seats are to be reused remove old sliders and discard. Keep the four (4) mounting bolts. They will be reused for mounting Quadratec Seat Sliders to seats. Push down (toward seat bottom) on Quadratec Slider adjuster arm and push inner slide (with mounting studs) forward to expose rear seat mounting holes. Place slider onto seat and secure to rear mounting hole using bolts removed earlier. (Fig 4)

! CAUTION !

SEATS, SEAT ADAPTORS, SLIDERS AND RISERS MAY HAVE SHARP EDGES. EXTREME CAUTION SHOULD BE TAKEN TO AVOID INJURY.

STEP 3 (Factory Seat Riser - Track Slide Secured With Torx Head Bolts / Nuts Welded To Riser)



Push down (toward seat bottom) on Quadratec Slider adjuster arm and push inner slide (with mounting studs) back to expose front seat mounting holes. Secure to front mounting hole using bolts removed earlier. Double check adjuster arm function. Tighten all bolts. (Fig 4) Place riser onto seat and seat slider. Riser may need to be pressed at each corner for Quadratec Slider mounting studs to pass through riser mounting holes. (Fig 5)

STEP 5 (Factory Seat Riser - Track Slide Secured With Torx Head Bolts / Nuts Welded To Riser)



Using supplied M8 Nylock nuts and M8 Flat washers secure riser to Quadratec Seat slider. Tighten all bolts. (Fig 6) Inspect 9/16" mounting threads on vehicle. If needed chase threads with 9/16" tap/thread chaser. Reinstall New Quadratec Seat Riser, seat slider and seat into vehicle using the four (4) riser mounting bolts removed in Step 1. Torque mounting bolts to 34 ft/lbs. (Fig 9)

Quadratec® Exclusive Three Year Limited Warranty

Your Quadratec® branded accessories are covered by the following Limited Warranty provided exclusively by Quadratec, Inc., 1028 Saunders Lane, West Chester PA 19380.

This **Limited Warranty** is the only warranty made in connection with your purchase. Quadratec neither assumes nor authorizes any vendor, retailer or other person or entity to assume for it any other obligation or liability in connection with this product or Limited Warranty. This Limited Warranty does not apply and is not cumulative to any accessory or part distributed by Quadratec for which the Manufacturer provides a separate written warranty.

What is Covered:

Subject to the terms, exclusions and limitations herein and with respect only to Quadratec branded accessories first sold in the United States, Quadratec warrants to the initial retail purchaser only that your Quadratec accessory shall be free of defects in material and workmanship: for a period of three (3) years from date of retail purchase.

This **Limited Warranty** is not assignable and shall terminate upon sale of the vehicle upon which the Quadratec accessory is installed or other transfer to third persons.

All other warranties are hereby disclaimed, except to the extent prohibited by applicable law in which case any implied warranty of merchantability or fitness for a particular purpose on this product is limited to 3 years from date of initial retail sale. Quadratec reserves the rights to: **(a.) require invoice or other proof your accessory is within the terms of this Limited Warranty as a condition of warranty service and, (b.) make future revisions to this product and Limited Warranty without prior notice or obligation to upgrade your product.**

What is Not Covered:

Your Quadratec Limited Warranty does not cover products or parts Quadratec determines to have been damaged by or subjected to: **(a.) installation damage, alteration, modification, combination with other parts, failure to maintain or improper repair or service, (b.) normal wear & tear, cosmetic damage or damage from moisture or water immersion, (c.) Acts of God, accidents, misuse, negligence, inadequate mounting or impact with vehicle(s), obstacles or other aspects of the environment, (d.) theft, vandalism or other intentional damage.**

Remedy Limited to Repair/Replacement:

The exclusive remedy provided hereunder shall, upon Quadratec inspection and at option, be either repair or replacement of product or parts (new or refurbished) covered under this Limited Warranty. Customers requesting warranty consideration should first contact Quadratec to obtain a RGA number (610-701-3336). All labor, removal, shipping and installation costs are customer's responsibility.

Other Limitations - Exclusion of Damages - Your Rights Under State Law:

In consideration of the purchase price paid, neither Quadratec nor any independent Quadratec distributor/licensee are responsible for any time loss, rental costs, or for any incidental, consequential, punitive or other damages you may have or incur in connection with any part or product purchased. Your exclusive remedy hereunder for covered parts is repair/replacement as described above.

This **Limited Warranty** gives you specific rights. You may also have other rights that vary from state to state. For example, some states do not allow limitations of how long an implied warranty lasts and /or do not allow the exclusion or limitation of incidental or consequential damages, so the limitations and exclusions herein may not apply to you.

©Quadratec, Inc. 2021. All Rights Reserved.
A4 Version 11/17/2021