

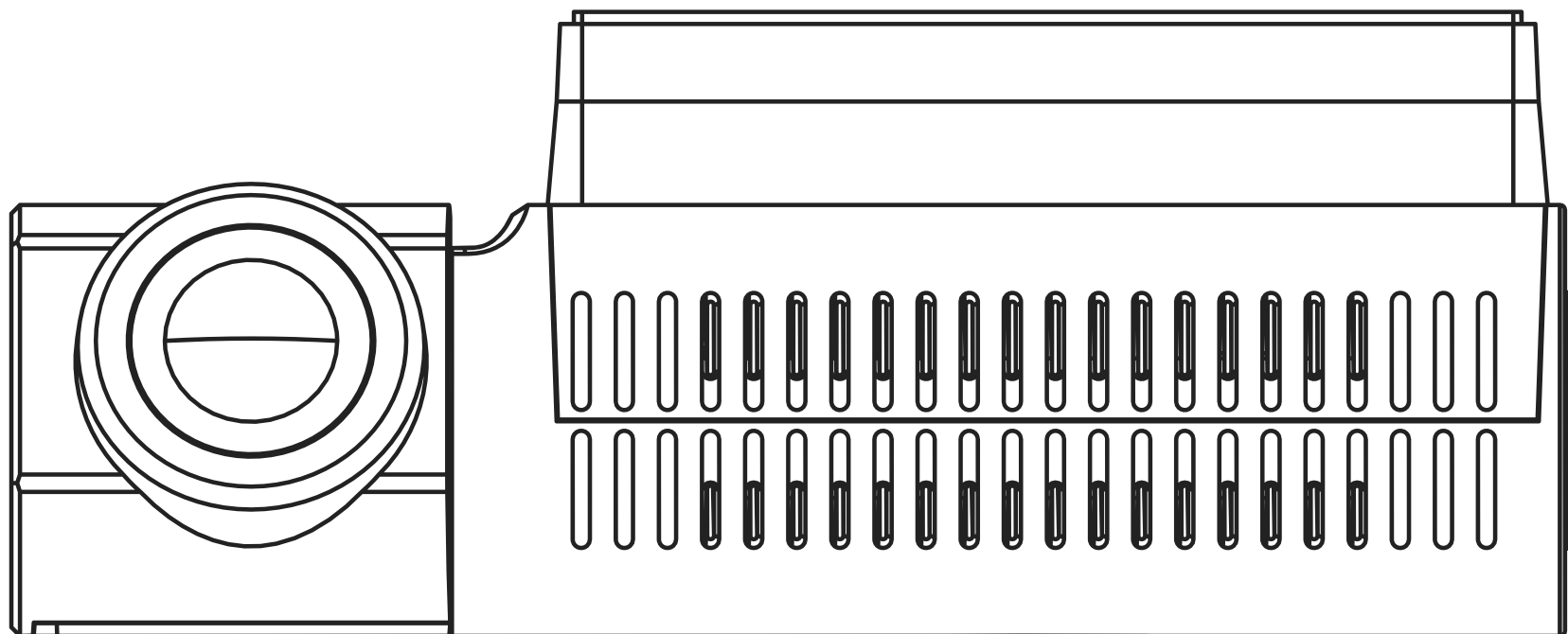
SYLVANIA

ROADSIGHT STEALTH

Dash Camera

Caméra-témoin de circulation

Cámara Delantera



WARNING

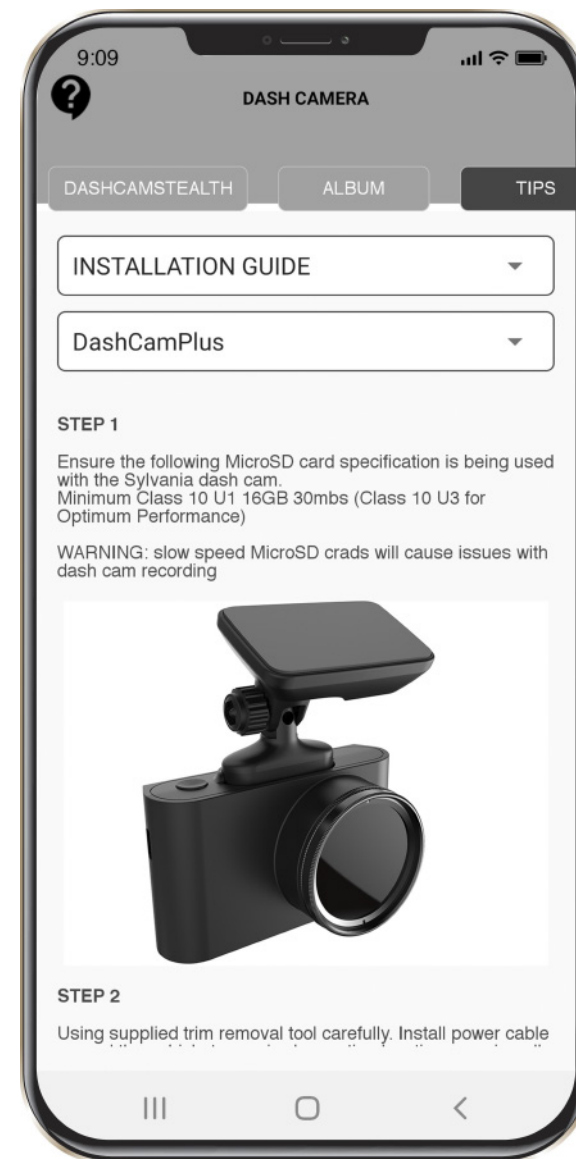
The Dash Cam must not be fitted in a position which obscures the driver's view of the road ahead.

Depending on the country of use, recordings made with this device may be subject to Data Protection Laws. Ensure these are complied with. If the dash cam is to be used in a commercial environment e.g. taxi or truck, then CCTV Regulations may apply. Playback of video which is visible to the driver while the vehicle is in motion is prohibited in some countries. Only use the supplied power adapter, otherwise damage may occur to the dash cam. Take care when cleaning the dash cam lens and only use a suitable lens cleaner and a soft cloth. Do NOT expose this product to rain, moisture or water under any circumstances; doing so may result in the risk of electric shock or fire. Do NOT perform servicing other than that contained in the instruction manual, unless you are qualified to do so. When installing in a vehicle, always place the device securely against the windscreen and where possible conceal the power cable under the vehicles interior trim. Make sure that the power cable doesn't interfere with the driver's controls such as the steering wheel, pedals or gear lever. Do NOT mount the dash cam in front of an airbag deployment area or in a position to obscure any interior mirrors. Do NOT operate while driving and only adjust settings or review recordings while not driving.

BEFORE YOU BEGIN

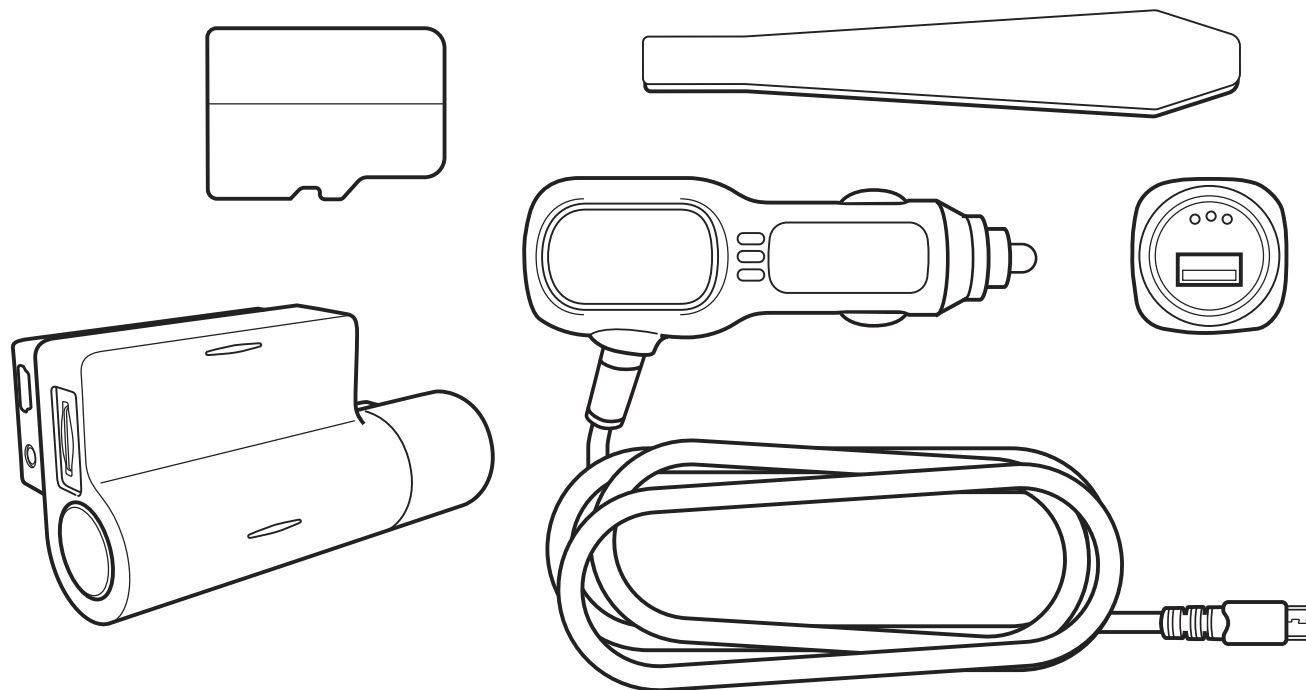
If you haven't already downloaded the app, do so now to get the most from your dash camera.

- 1 Download the app by searching for SYLVANIA CONNECT in the App Store (iPhone) or Google Play (Android).
- 2 Open the app, follow the setup process shown and enable all necessary settings when prompted.



PACKAGE CONTENTS

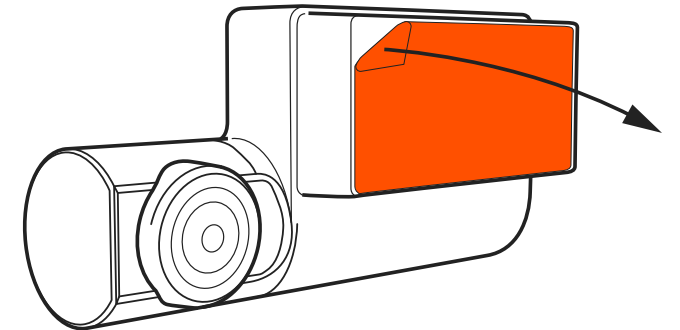
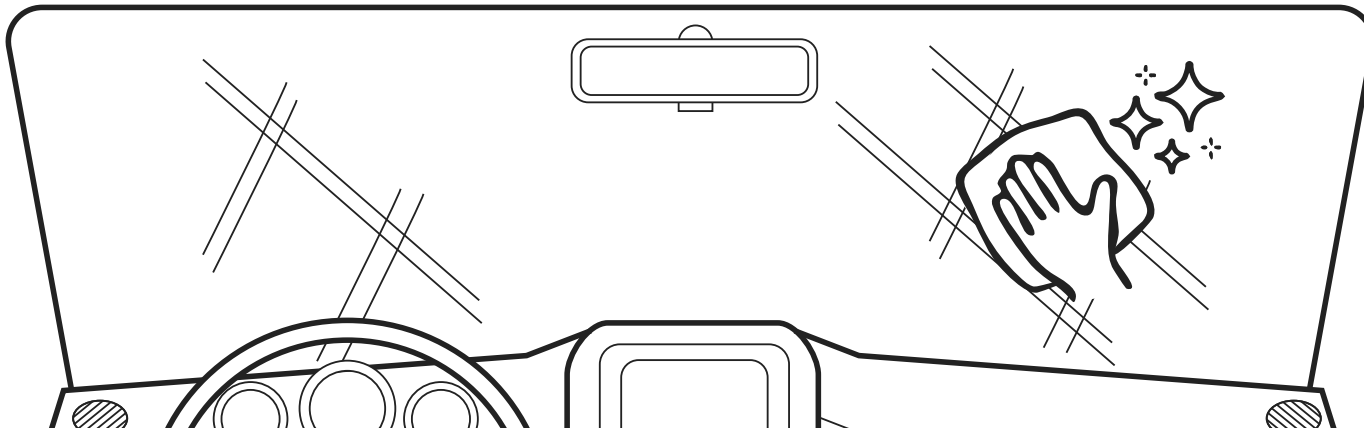
- 1 Dash Cam
- 2 Quick Start Guide
- 3 Magnetic Mount
- 4 USB Charging Cable
- 5 Trim Removal Tool
- 6 Window Sticker
- 7 SD Card





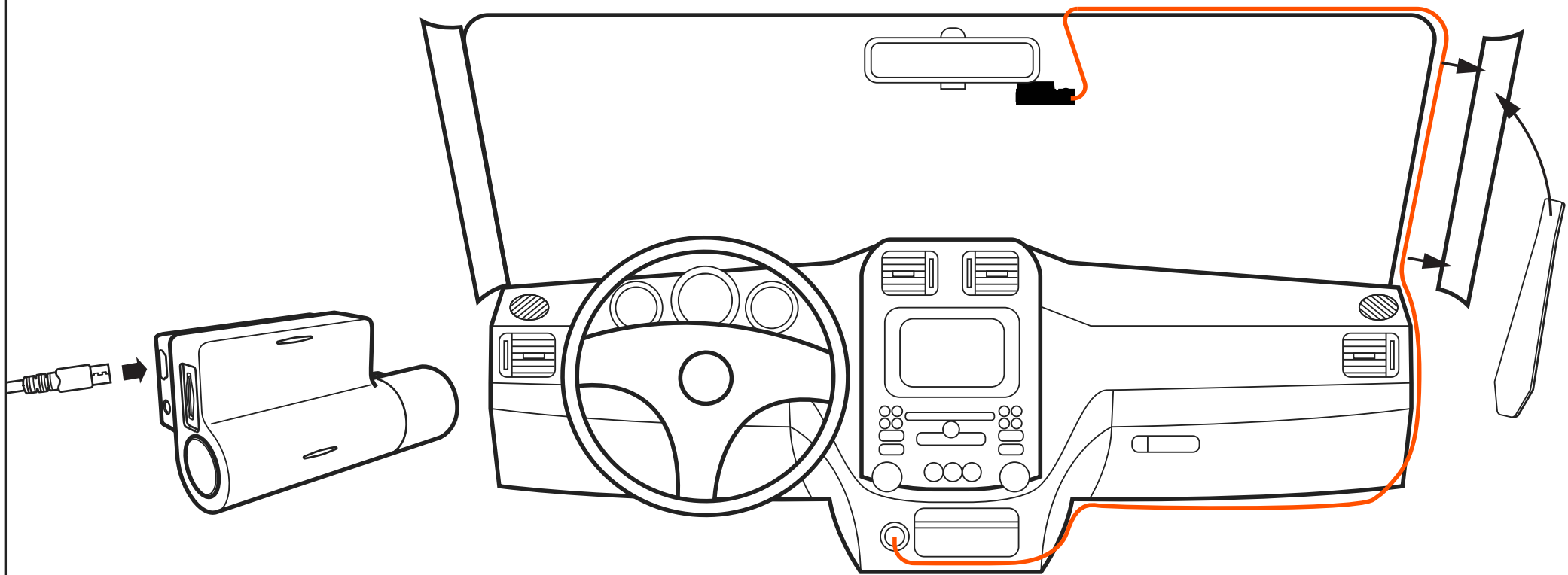
ATTENTION! Choose the installation location in advance, as the adhesive tape on the mount is of single use.

- 1** Ensure glass is dirt, dust and grease free.
- 2** Warm adhesive pad part of mount in hands to ensure strong adhesion to glass.
- 3** Once mount has been positioned connect dash camera to the magnetic mount.



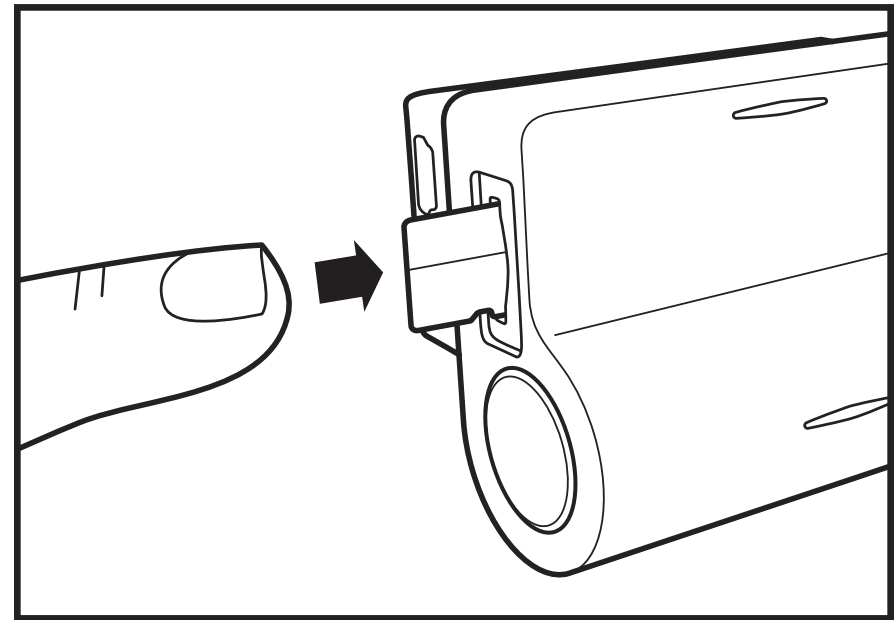
To power the device and charge the battery, use only the power adapter included. Connect the power cable to the mount, and then plug the USB charger into the vehicles 12v power socket.

When the vehicle's engine starts, the device turns on automatically.



INSTALLING microSD CARD

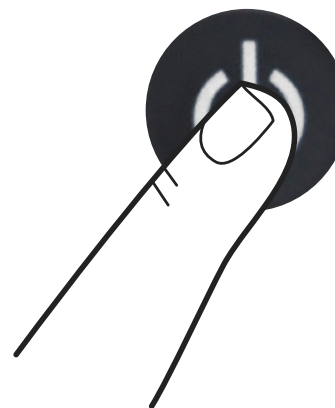
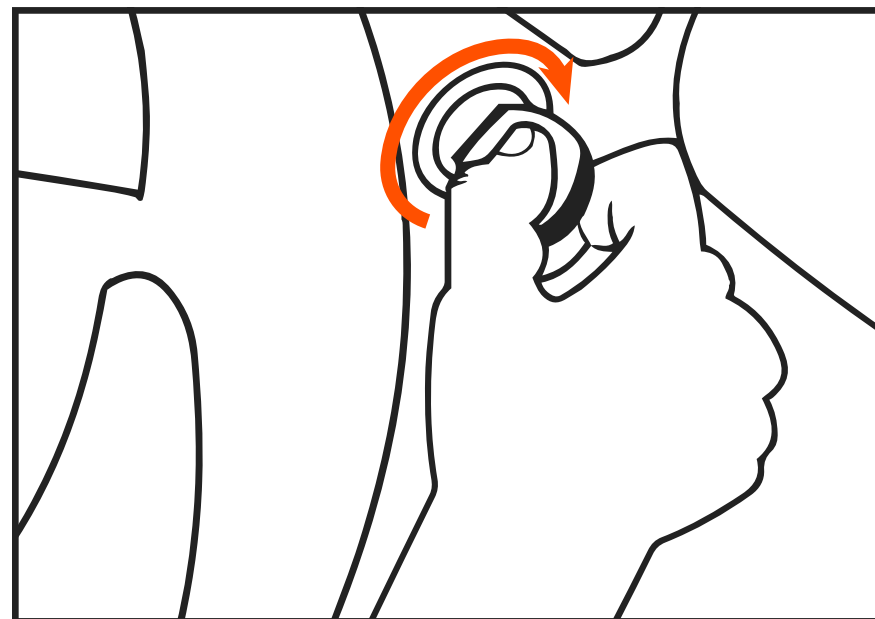
- 1** Before installing a memory card, make sure the device is turned off.
- 2** Insert the memory card until it clicks into place.
- 3** Removing a card: press the card slightly and then remove it from the slot.



WARNING! Do not apply excessive force when inserting a memory card to avoid damage to the device. If necessary, use a thin pointed device to push the card further. To remove the memory card, push the card until it clicks and remove the card from the slot.

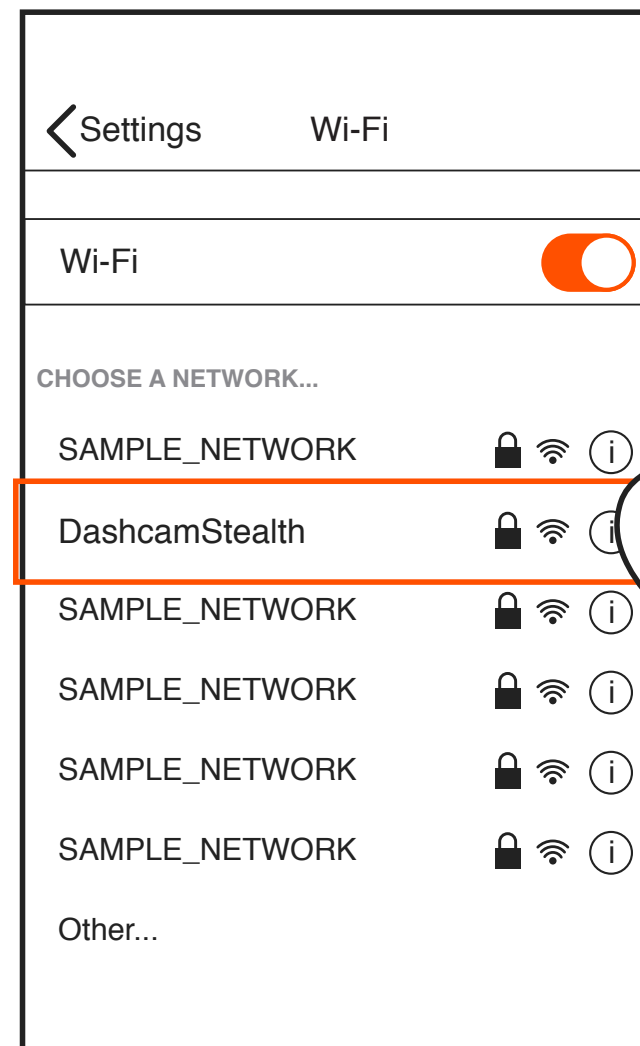
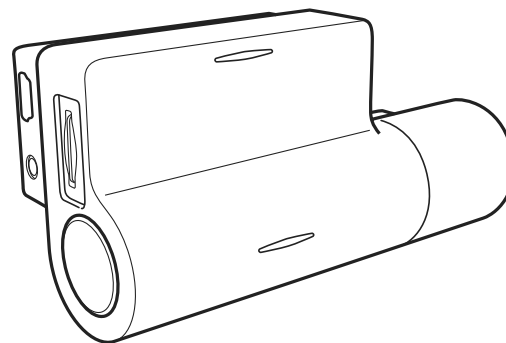
TURNING ON / OFF

- When the vehicle ignition is turned ON the dash cam turns on automatically.
- To turn the device on manually, press the power button.
- To turn the device off press and hold the power button for approx. 3 seconds.



CONNECTING TO MOBILE

- 1** Your camera automatically broadcasts a Wi-Fi network.
- 2** Open your phone's Settings.
- 3** Tap on Wi-Fi or Connections.
- 4** Select the dash camera hotspot and enter the password "12345678".
- 5** You are now connected to your device.



ADJUSTING VIEWING ANGLE



ATTENTION! Adjusting the viewing angle can only be done along the vertical axis, so be sure to position the device correctly on the windshield along the horizontal axis as close as possible to the windshield's center.

While pulling or pushing the device in the holder, ensure that the camera captures the image in proportions of 30% sky / 70% road.



GOOD

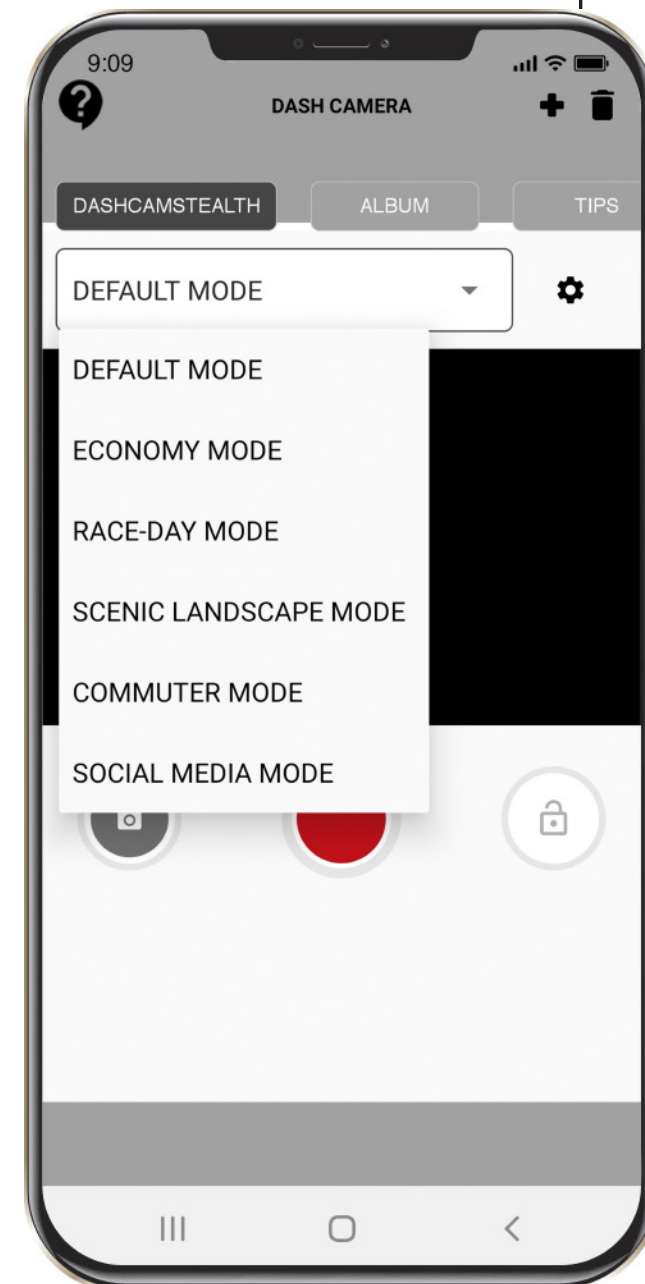


BAD

RECORDING MODES

Select different recording modes from the dropdown menus.

	DEFAULT	ECONOMY	RACE-DAY	SCENIC LANDSCAPE	COMMUTER	SOCIAL MEDIA
RESOLUTION	HIGH	MID	HIGH	HIGH	HIGH	HIGH
SNAPSHOT	HIGH	MID	LOW	HIGH	HIGH	HIGH
LOOP RECORDING	3 MIN	3 MIN	5 MIN	5 MIN	3 MIN	3 MIN
G-SENSOR SENSITIVITY	MID	LOW	HIGH	LOW	HIGH	LOW



MENU SETTINGS

To access the Menu settings, press the “Settings” button on the main menu.

Video Quality: Select required option (the highest option provides the optimum viewing performance).

Image Resolution: 1-12 Megapixels

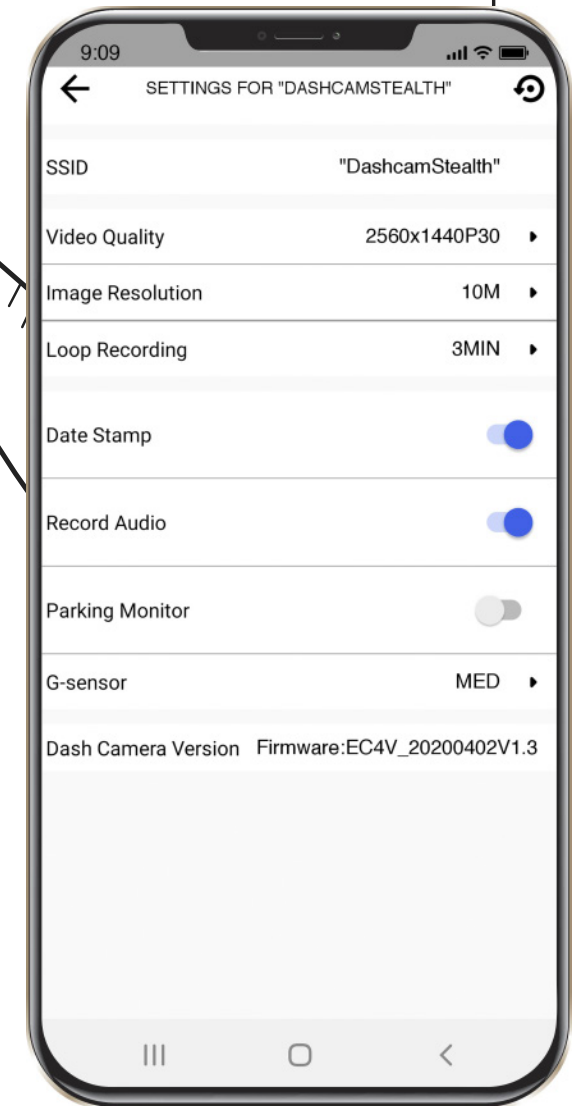
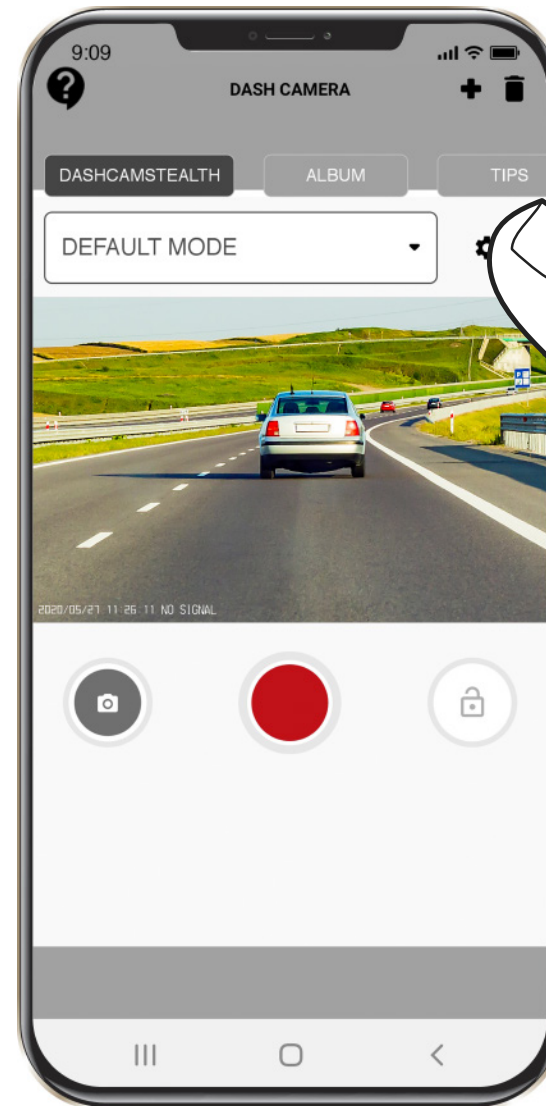
Loop Recording: 1, 3, or 5 minutes

Date Stamp: OFF / ON

Record Audio: OFF / ON

Parking Monitor: OFF / ON

G-sensor: OFF / LOW / MEDIUM / HIGH



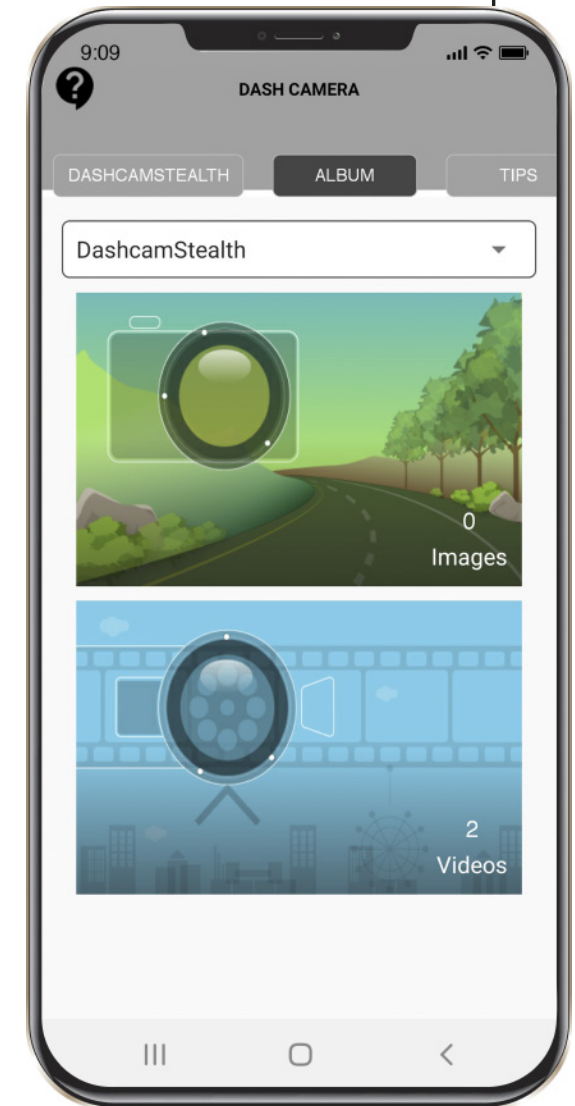
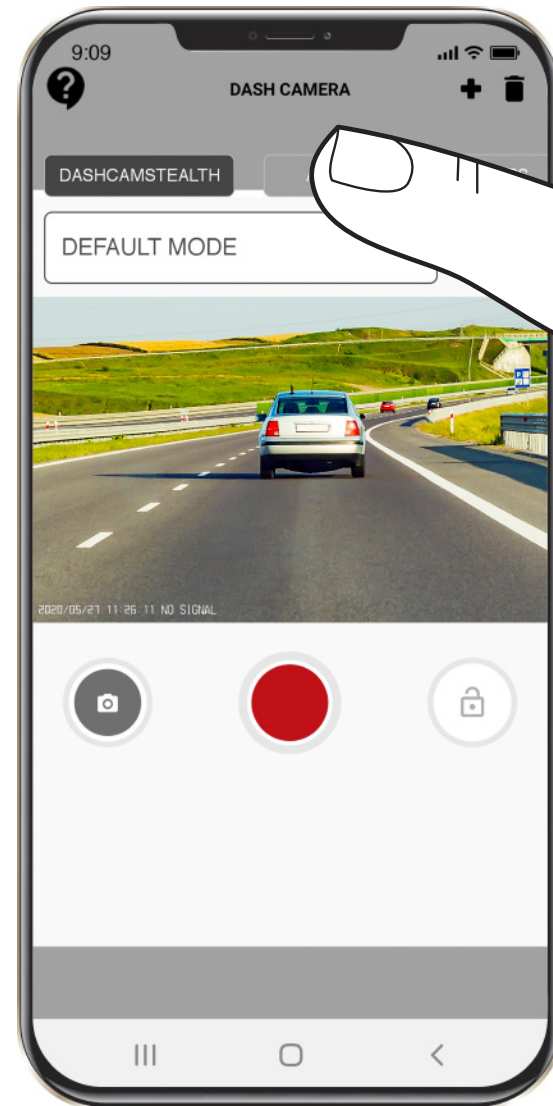
EMERGENCY RECORDING

- 1** Emergency recording is to protect the current video file from being overwritten and deleted.
- 2** Emergency recording is activated automatically when the G-sensor triggers (sudden acceleration / deceleration), or at point of collision. Emergency recording is locked automatically to avoid erasing during loop recording.



RECORDING PLAYBACK

- 1 To access the playback menu, press the album button on the main screen.
- 2 Video & Image Menu
 - Select either Videos or Images tiles to view.



VIDEO MENU

- 1 Short-press each video file once to get into the playback menu.
- 2 Press and hold each video file for 3 seconds to access the video's sub-menu. From there, lock, download, share, or delete the selected video.

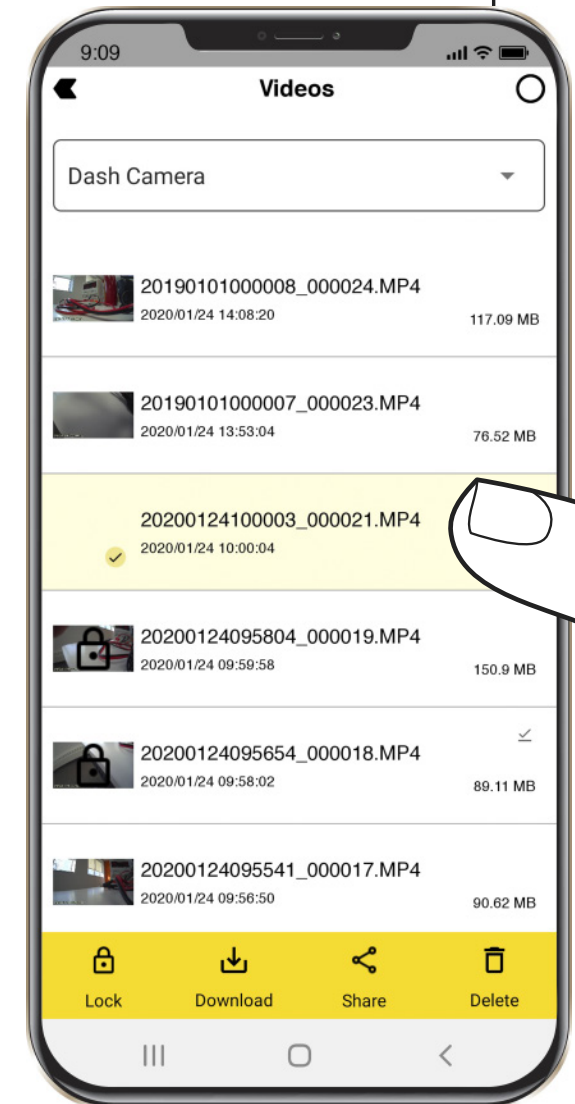
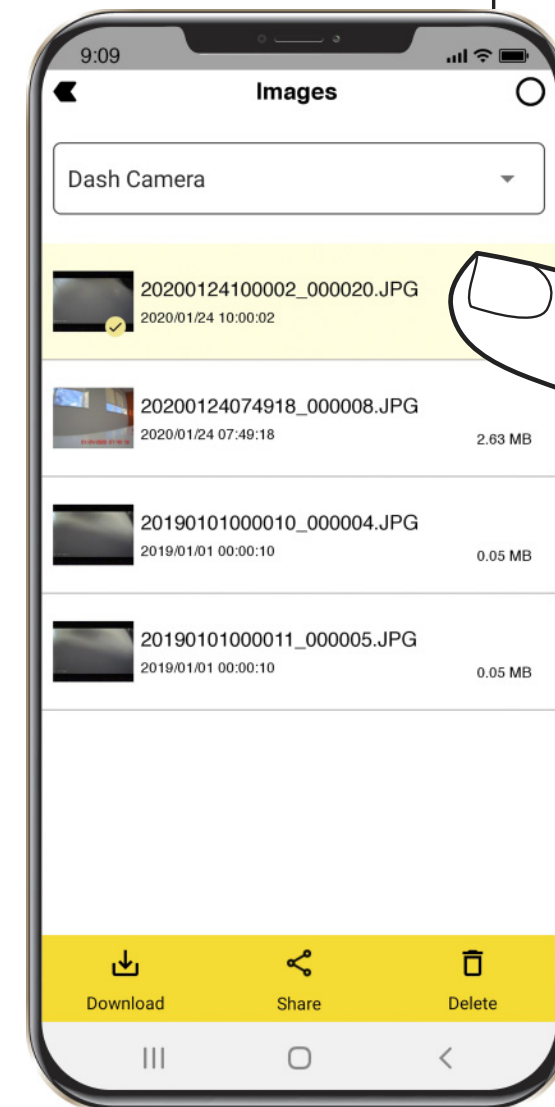


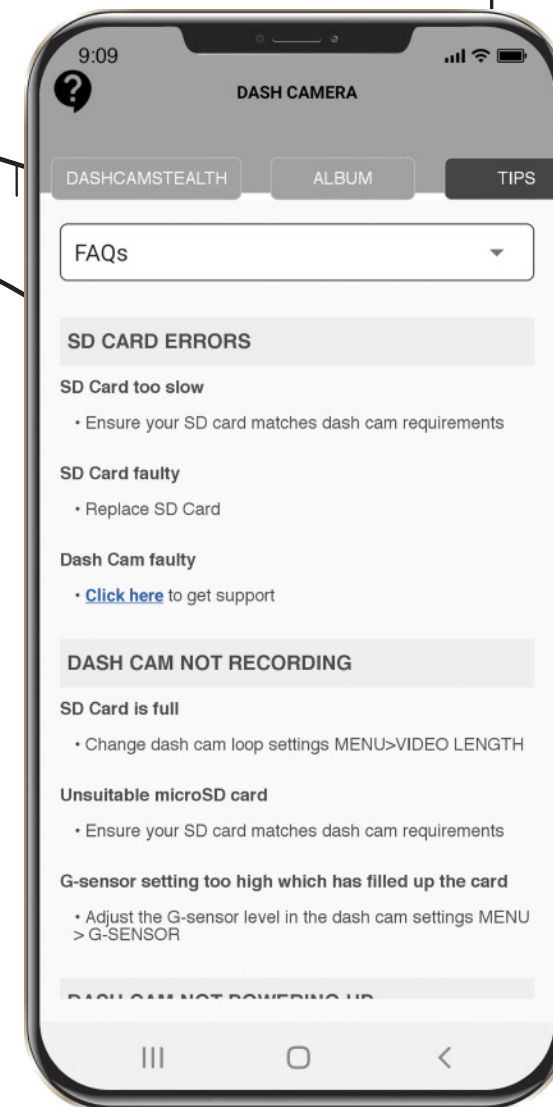
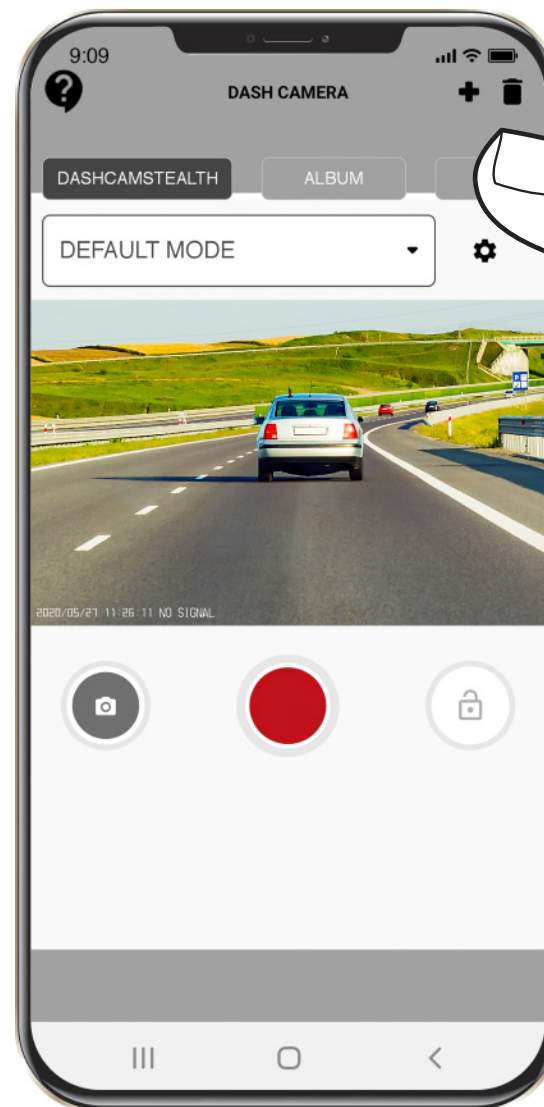
IMAGE MENU

- 1 Short-press each image file once to get into the playback menu.
- 2 Press and hold each image file for 3 seconds to access the video's sub-menu. From there, lock, download, share, or delete the selected image.



TIPS MENU

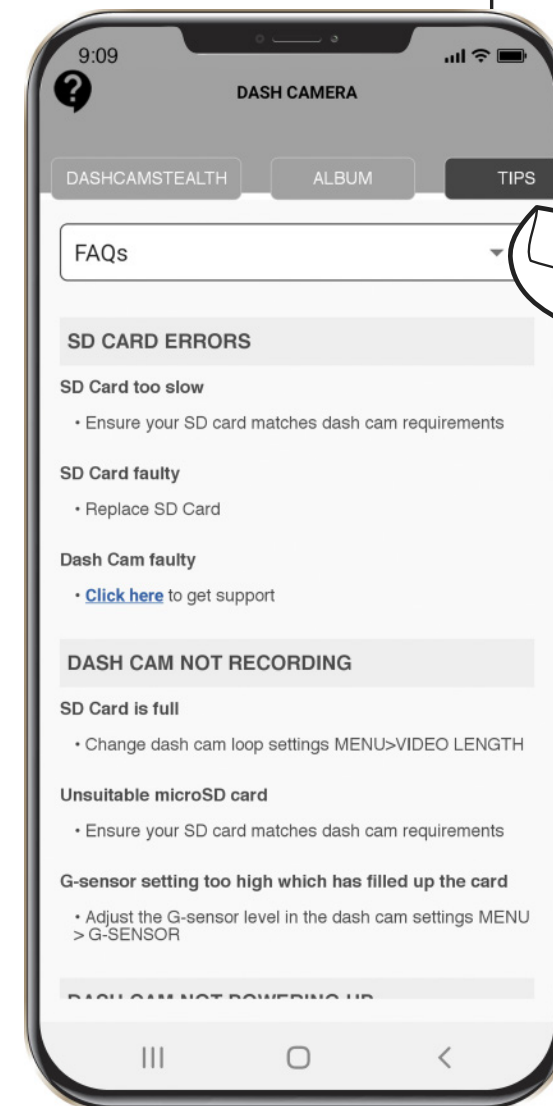
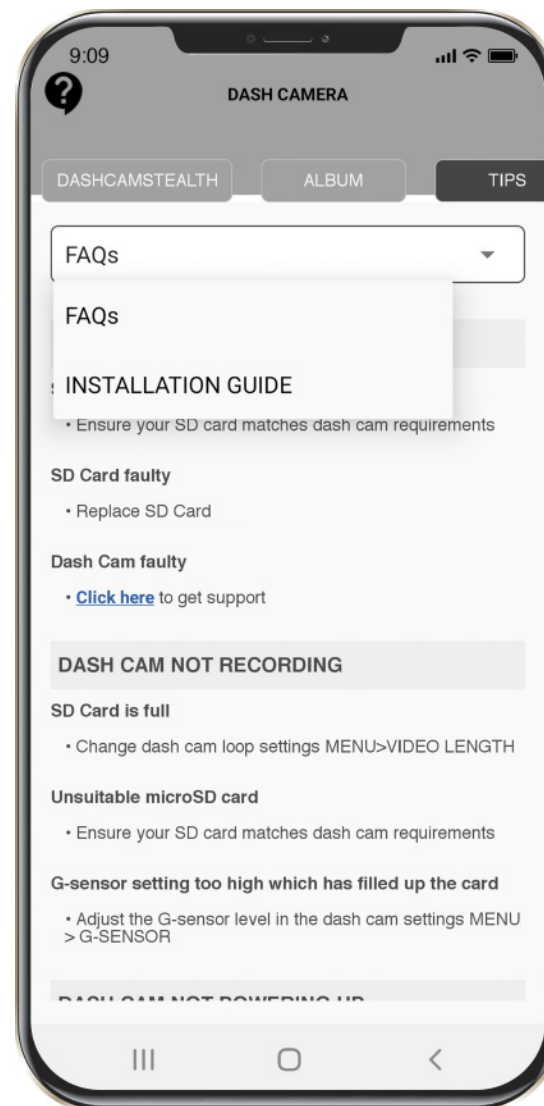
To access the Tips Menu, press the “Tips” button on the main menu.



FAQs MENU

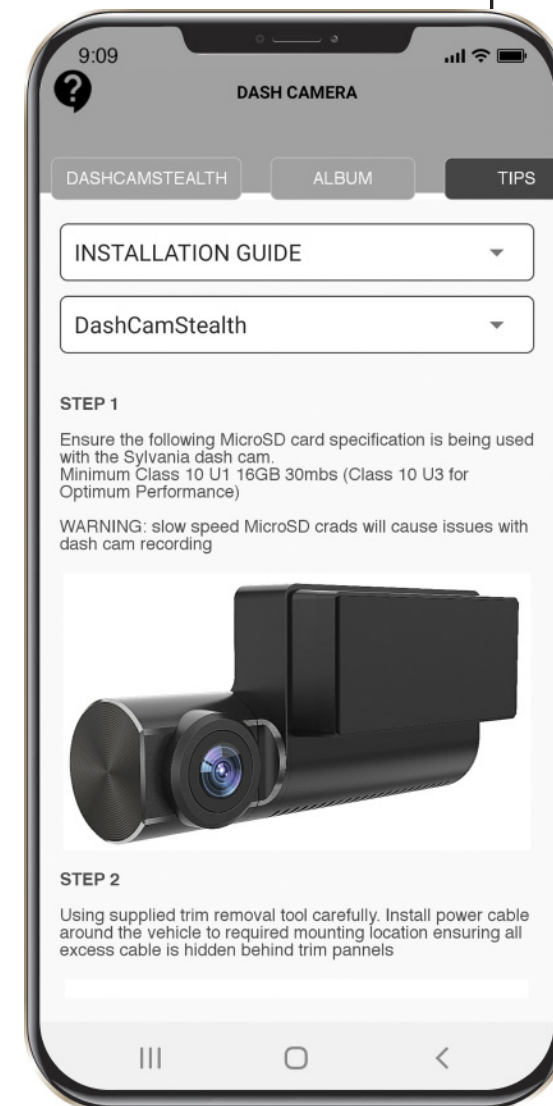
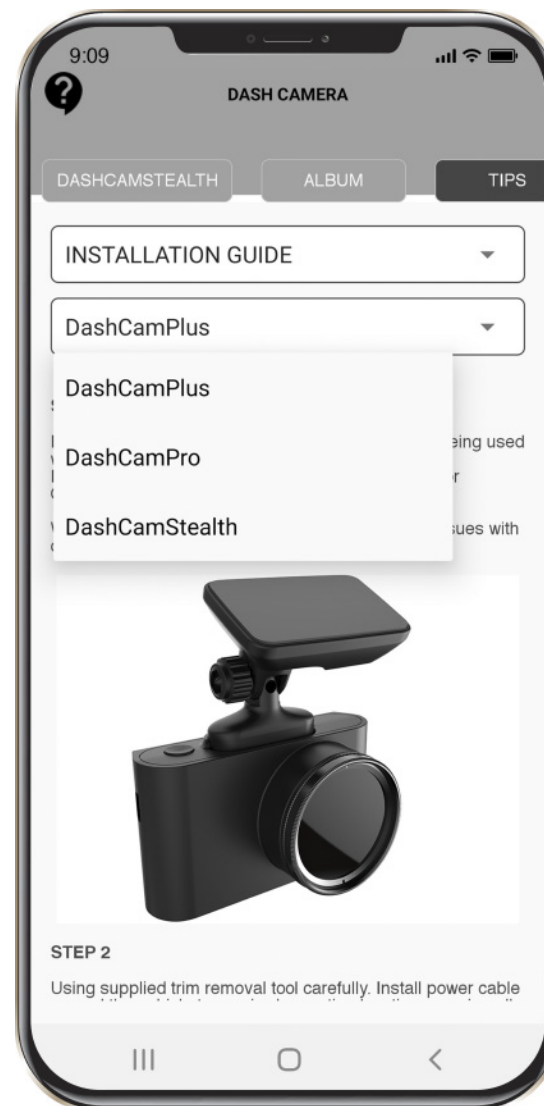
To access the FAQs Menu, press the dropdown menu and select FAQs.

Swipe up or down to view all common frequently asked questions.



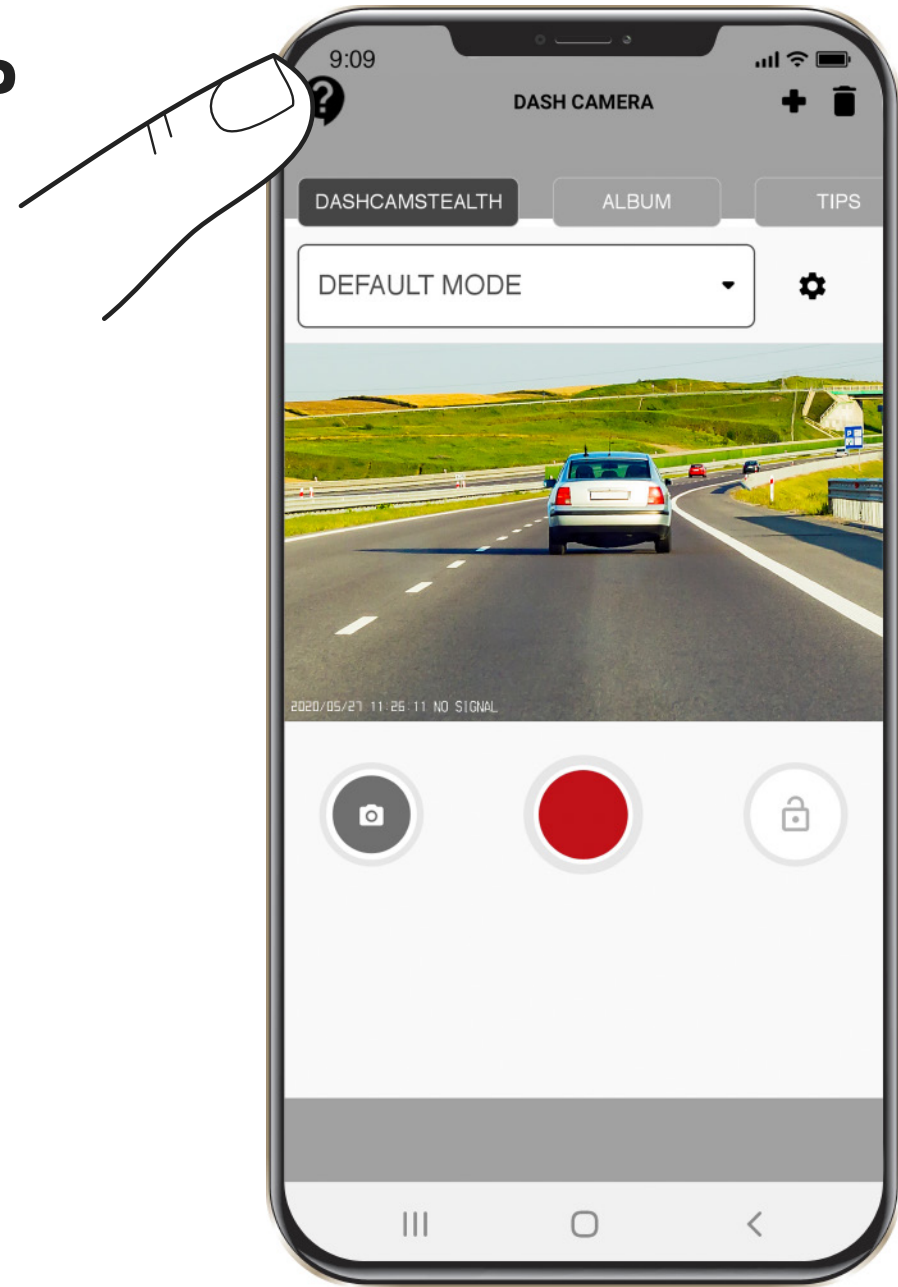
INSTALLATION GUIDE MENU

- 1 To access the Installation Guide Menu, press the dropdown menu and select Installation Guide.
- 2 Another dropdown menu will appear. Select the dash cam being used from the dropdown menu.



CUSTOMER SERVICE HELP

Have an issue? Click the question mark in the top left corner of the main menu.



FAILURE TO PHOTOGRAPH/RECORD VIDEO

Check if there is enough free space on the micro SD card.

RECORDING HAS STOPPED

Too many video files stored. Only use at least class 10 U1 high-speed micro SD cards by proven manufacturers.

When you try to view a photo/play a video file, the “wrong file” message appears.

File writing failure due to micro SD card file system error. Format the micro SD card.

BLURRED IMAGE

Ensure removal of lens sticker. Check for dirt on the lens. If there is any, wipe the lens with a soft cloth before use (it is recommended to use special care products for the optics in order not to damage the surface of the lens).

HANG UP (NO IMAGE, NO BUTTON RESPONSE)

Press the RESET button to reboot the device.

UPDATING FIRMWARE

- 1** Download the firmware file at www.sylvania-automotive.com/firmware and extract the file from the archive.
- 2** Format the memory card and transfer the extracted file to the micro SD memory card.
- 3** Insert the memory card with the downloaded file into the dash cam slot.
- 4** Connect the device to a power source and turn it on.
- 5** The indicator light will flash while the firmware file is being downloaded to the device.
- 6** Upon completion of the process, the device will reboot automatically.
- 7** Check in the settings menu if the correct firmware version is displayed.
- 8** Format the memory card with the dash cam menu.



ATTENTION! If the memory card is not formatted after the update, the update process will be started again the next time it is turned on.

ATTENTION! Do not turn off the dash cam power during the firmware update.

FEATURES

STEALTH

Greatest Image
Quality

1440P

Full HD at 30 FPS

140°

Field of View

128GB

Memory Size*

20 HRS

Record
Time**

PRO

Most Features

1296P

Full HD at 30 FPS

130°

Field of View

64GB

Memory Size*

12 HRS

Record Time**

PLUS

Better Vision

1080P

Full HD at 30 FPS

120°

Field of View

32GB

Memory Size*

6 HRS

Record Time**

BASIC

720P

Full HD at 30 FPS

110°

Field of View

32GB

Memory Size*

3 HRS

Record Time**

* Maximum allowable memory card size.

** Max record time dependent on screen resolution, memory card size, and rear camera attachment.

POWER REQUIREMENTS



ATTENTION! Once there is no external power input, the battery cannot support recording for a long time, please make sure power supply is connected when recording .

Input voltage: 5VDC, 1.5A

Charging input voltage: 12-24VDC

Mini USB Connection for Power

OPERATING TEMPERATURES (all models)

Storage temperature: -4° F to 158° F (-20° C to 70° C)

Operating temperature: 14° F to 140° F (-10° C to 60° C)

PLEASE RECYCLE YOUR SPENT BATTERIES

Batteries should not be disposed of in unsorted municipal waste, but separately collected to facilitate the correct treatment and recycling of the substances they contain. The recycling of batteries ensures the recovery of these valuable materials and prevents any potentially harmful effects upon both the environment and human health.