



JEEP 2019-UP JT Gladiator DS2 Steps

Thank you for choosing Rough Country for all your vehicle needs.

Please read instructions before beginning installation. Check the kit hardware against the kit contents shown below. Be sure you have all needed parts and know where they go.

If question exist, please call us @1-800-222-7023. We will be happy to answer any questions concerning this product.

Check all fasteners for proper torque. Check to ensure for adequate clearance between all components.

Periodically check all hardware for tightness.

KIT CONTENTS:

- Driver Side Step x1
- Passenger Side Step x1
- Driver Side Step Brackets x4
- Driver Side Pinch Brackets x4
- Pass Side Step Brackets x4
- Pass Side Pinch Brackets x4

TOOLS NEEDED:

- 13mm Wrench and Socket

HARDWARE INCLUDED:

- 8mm Hex head Bolts x38
- 8mm Flat Washers x68
- 8mm Lock Washers x16
- 8mm Nylock Nuts x30



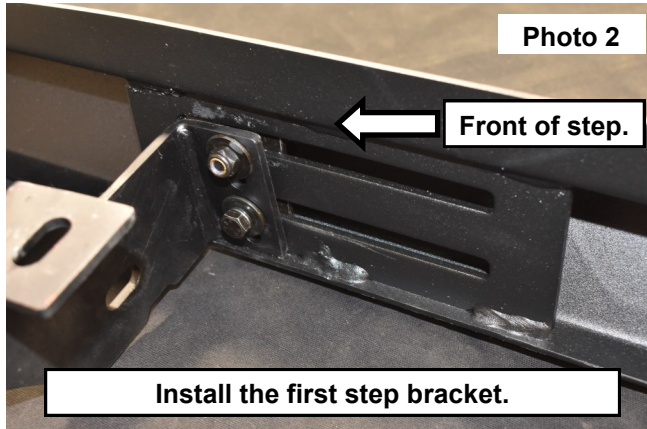
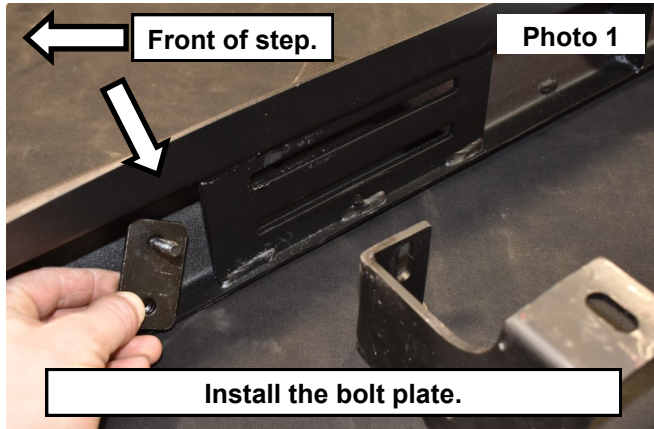
Torque Specs:

Size	Grade 5	Grade 8	Size	Class 8.8	Class 10.9
5/16"	15 ft/lbs	20ft/lbs	6MM	5ft/lbs	9ft/lbs
3/8"	30 ft/lbs	35ft/lbs	8MM	18ft/lbs	23ft/lbs
7/16"	45 ft/lbs	60ft/lbs	10MM	32ft/lbs	45ft/lbs
1/2"	65 ft/lbs	90ft/lbs	12MM	55ft/lbs	75ft/lbs
9/16"	95 ft/lbs	130ft/lbs	14MM	85ft/lbs	120ft/lbs
5/8"	135ft/lbs	175ft/lbs	16MM	130ft/lbs	165ft/lbs
3/4"	185ft/lbs	280ft/lbs	18MM	170ft/lbs	240ft/lbs

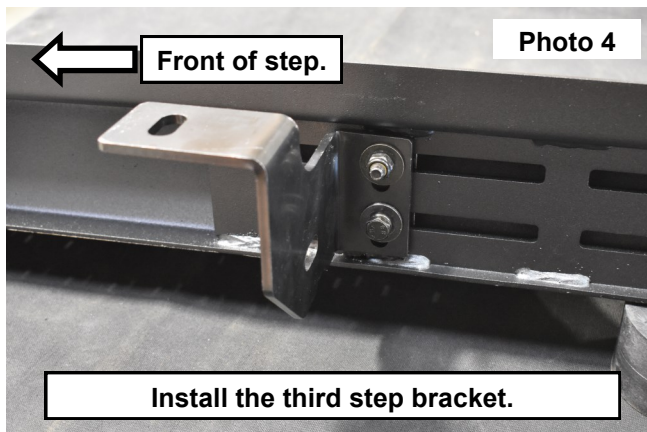
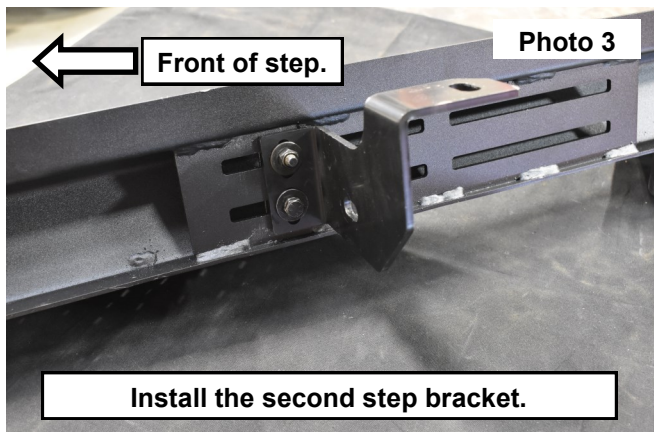


INSTALLATION INSTRUCTIONS

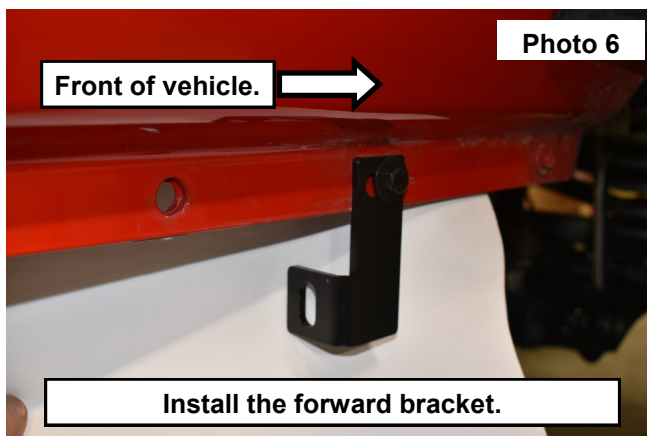
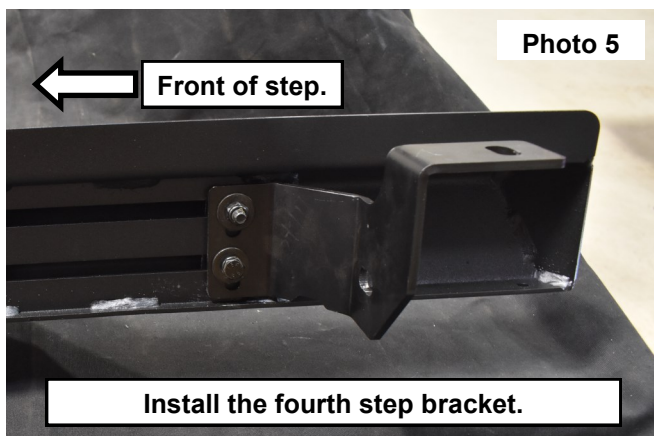
1. Installing the (4) brackets onto the step will use the nut and bolt plate to secure the step bracket to the step. **See Photo 1. Photos below show the passengers side step for reference. Note orientation of brackets.**
2. Secure the first bracket to the front of the step using the supplied 8mm nylock nut and 8mm washer on to the top stud and use an 8mm hex head bolt, 8mm lock washer and a 8mm washer in the lower bolt plate. Snug hardware onto the step letting the bracket slide using a 13mm socket. **See Photo 2.**



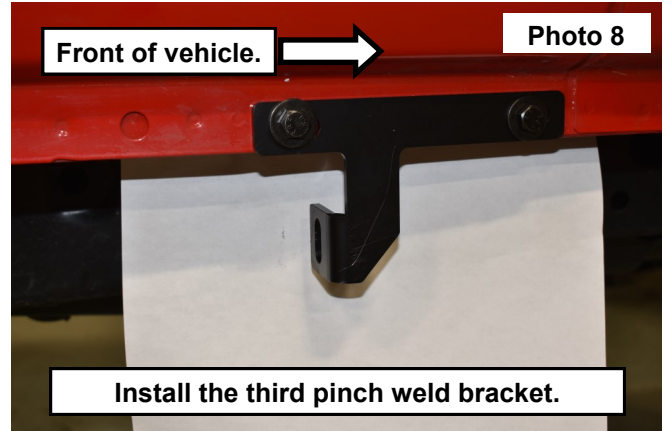
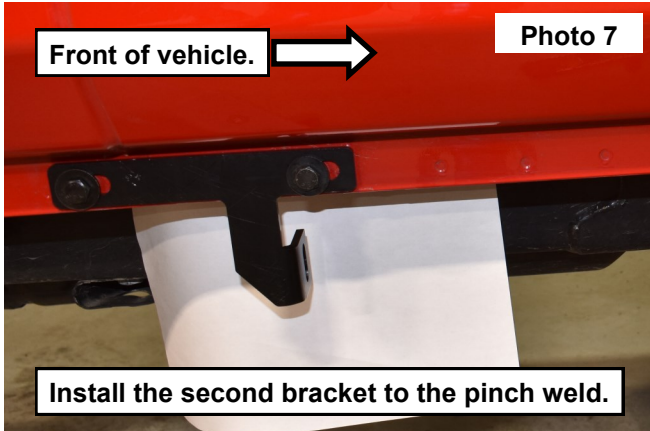
3. Install the second step bracket onto the step using the bolt plate and supplied 8mm hardware. Snug hardware onto the step letting the bracket slide using a 13mm socket. **See Photo 3.**
4. Install the third step bracket onto the step using the bolt plate and supplied 8mm hardware. Snug hardware onto the step letting the bracket slide using a 13mm socket. **See Photo 4.**



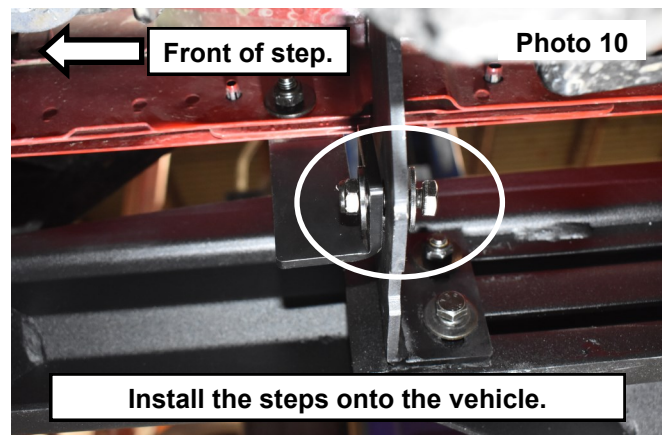
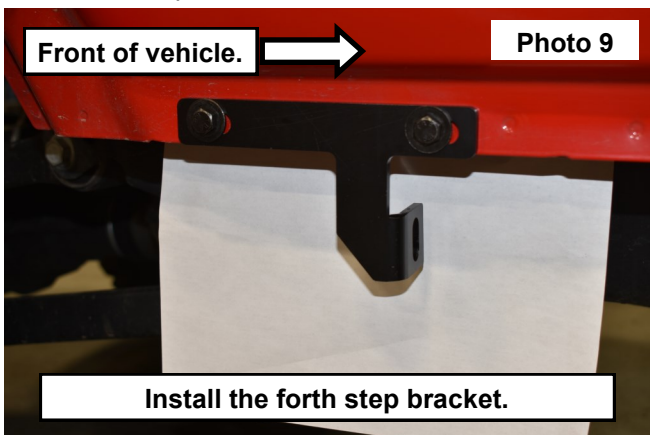
5. Install the fourth step bracket onto the step using the bolt plate and supplied 8mm hardware. Snug hardware onto the step letting the bracket slide using a 13mm socket. **See Photo 5.**
6. Install the forward bracket to the pinch weld on the front of the passengers side of the vehicle. Secure using (1) 8mm hex head bolt, (2) 8mm Washers and (1) 8mm nylock nut. **See Photo 6.** Snug the hardware using a 13mm wrench and socket.



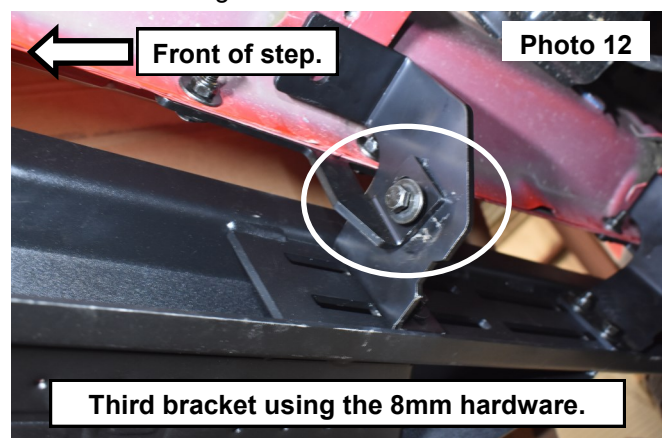
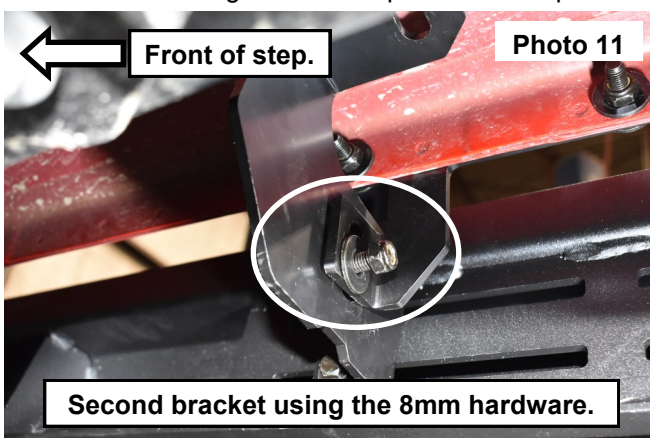
7. Install the second bracket to the pinch weld on the passengers side of the vehicle. Secure using (2) 8mm hex head bolt, (4) 8mm Washers and (2) 8mm nylock nut. **See Photo 7.** Snug the hardware using a 13mm wrench and socket.
8. Install the third bracket to the pinch weld on the passengers side of the vehicle. Secure using (2) 8mm hex head bolt, (4) 8mm Washers and (2) 8mm nylock nut. **See Photo 8.** Snug the hardware using a 13mm wrench and socket.



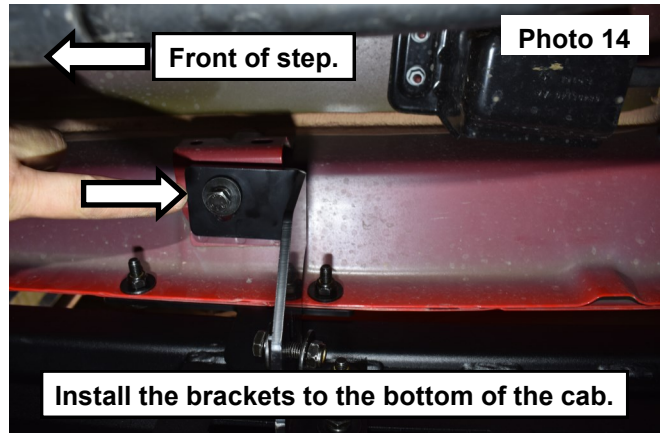
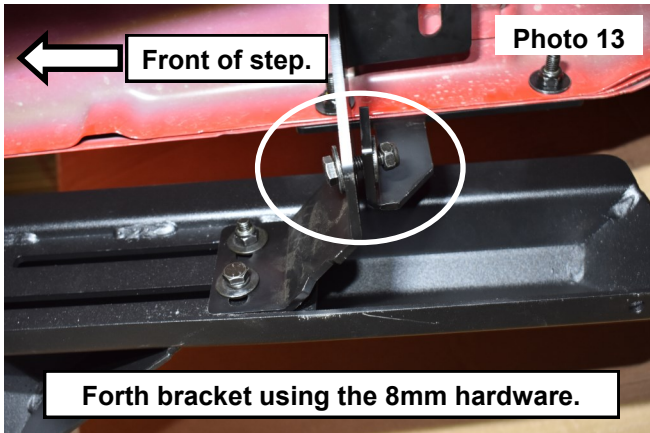
9. Install the fourth bracket to the pinch weld on the passengers side of the vehicle. Secure using (2) 8mm hex head bolt, (4) 8mm Washers and (2) 8mm nylock nut. **See Photo 9.** Snug the hardware using a 13mm wrench and socket.
10. Install the step, place the step brackets onto the installed pinch weld brackets.
11. Install (1) of the supplied 8mm hex head bolts, (2) 8mm washers and (1) 8mm nylock nut into the step bracket to the pinch weld bracket in the 4 brackets installed onto the step and the pinch weld photo 10 showing the front step bracket and pinch weld bracket. **See Photo 10.**



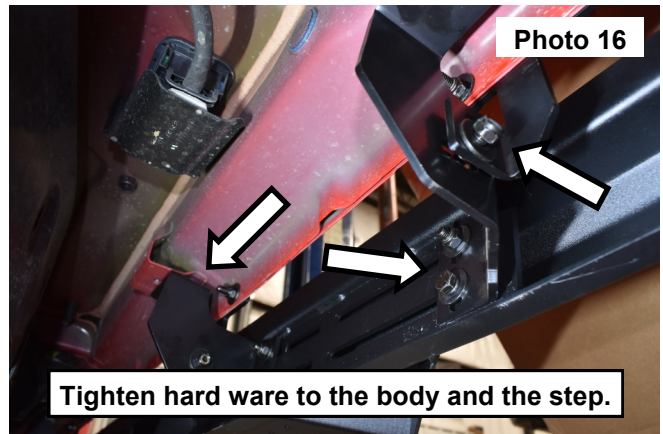
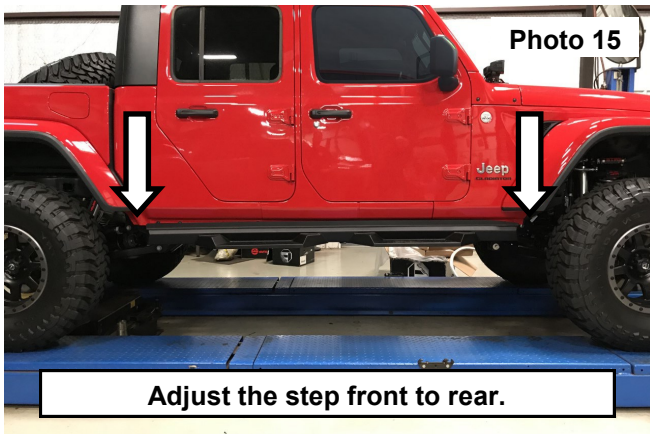
12. Photo 11 showing the second step bracket and pinch weld bracket secured using the 8mm hardware. **See Photo 11.**
13. Photo 12 showing the third step bracket and pinch weld bracket secured using the 8mm hardware. **See Photo 12.**



14. Photo 13 showing the forth step bracket and pinch weld bracket secured using the 8mm hardware. **See Photo 13.**
15. Adjust the step and install (1) 8mm hex head bolt, (1) 8mm lock washer and (1) 8mm washer in **each** step bracket to the bottom of the cab. **See Photo 14.**
16. Repeat step 15 for the next 3 step brackets.



17. With the brackets loosely tighten, adjust the step to the desired look front to rear on the vehicle. **See Photo 15.**
18. Tighten the (4) step mounts to the vehicle, Tighten the pinch weld brackets to the step mount. Then tighten the step to the step mount. using a 13mm wrench. **See Photo 16.**



19. Repeat steps for driver side of the vehicle.

By purchasing any item sold by Rough Country, LLC, the buyer expressly warrants that he/she is in compliance with all applicable, State, and Local laws and regulations regarding the purchase, ownership, and use of the item. It shall be the buyers responsibility to comply with all Federal, State and Local laws governing the sales of any items listed, illustrated or sold. The buyer expressly agrees to indemnify and hold harmless Rough Country, LLC for all claims resulting directly or indirectly from the purchase, ownership, or use of the items.

