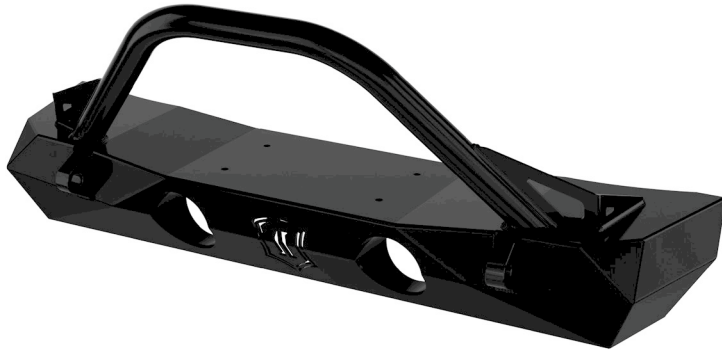




JL/JT PRO SERIES FRONT BUMPER

DOCUMENT: INST_25164_REVA • UPDATED: AUG 2020

Thank you for purchasing this ICON Vehicle Dynamics product. Please read through this entire document before proceeding with installation. If you are not confident in your mechanical skills, please seek the help of a professional to perform the installation. Check your packages immediately upon arrival to ensure that everything listed is included, and to check for damage during shipping. If anything is missing or damaged, or if you need technical assistance with any aspect of this installation, call (951) 689-ICON as soon as possible.



APPLICATION

These installation instructions apply to the following products:

25164 18-UP JEEP JL / 20-UP JT PS FRONT BUMPER W/ BAR & TABS

COMPONENTS INCLUDED

(1) JL-JT PRO Series Front Bumper

HARDWARE INCLUDED

(8) 7/16 Gr8 SAE Flat Washer
(8) 7/16-14 G8 Nylon Insert Lock Nut

TECH NOTES

NOTE: These installation instructions are based on a clean installation on to a stock 2018+ Jeep JL Wrangler. Previously modified vehicles may require additional steps.

TOOLS REQUIRED

- Ratchet with extension, 18mm & 3/4" sockets
- Torque wrench

FOG LIGHT COMPATIBILITY

NOTE: The recessed fog light mounts on this bumper are only directly compatible with the OE Jeep LED Fog Lamps, which are available as optional or standard equipment on all Jeep JL and JT models. The standard halogen fog lamps do NOT bolt in. However, LED cube lights from Rigid and other manufacturers may be easily installed, using adapter plates available from the LED light manufacturers.

IMPORTANT NOTICES - PLEASE READ FIRST

- ✓ **READ ALL INSTRUCTIONS THOROUGHLY FROM START TO FINISH BEFORE BEGINNING INSTALLATION! IF THESE INSTRUCTIONS ARE NOT PROPERLY FOLLOWED SEVERE FRAME, SUSPENSION AND TIRE DAMAGE MAY RESULT TO THE VEHICLE!**
- ✓ **ICON VEHICLE DYNAMICS RECOMMENDS ALL INSTALLATION TO BE PERFORMED BY A PROFESSIONAL SHOP/SERVICE TECHNICIAN. PRODUCT FAILURE CAUSED BY IMPROPER INSTALLATION WILL NOT BE COVERED UNDER ICON'S WARRANTY POLICY.**

INSTALLATION INSTRUCTIONS

1. Ensure the vehicle is placed on a flat, level surface with the transmission in PARK, the tires chocked, and the emergency brake ON. Wear safety glasses from this point forward.
2. Remove the stock skid plate or plastic lower valance using a 13mm and 16mm. [figure 1 & 2]



FIG. 1



FIG. 1

- 3. If your Jeep is equipped with factory fog lamps, reach behind the bumper and disconnect the fog lamp wiring harness from the chassis wiring harness. Disconnect and remove any other accessories from the front bumper such as a winch or off-road lights.
- 4. Use an 18mm deep socket with extension to remove the (8) nuts holding the bumper to the bumper mounting flanges on the end of each frame rail. There are two nuts on each side of each frame rail.

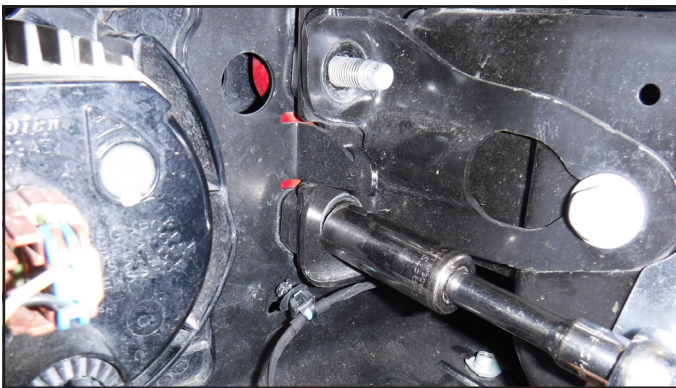


FIG. 1

- 5. Carefully slide the bumper off of the frame rails and set it aside.



FIG. 1

- 6. Remove the lower skid plate brackets from the bottom of the frame using a 16mm wrench or socket.
- 7. If you wish to re-use your Jeep's factory fog lamps*, remove them from the OE bumper and install them into the ICON Impact bumper.
**OE optional LED fog lamps only, see note at the beginning of these instructions.*
- 8. If running a winch, install it along with your fairlead mount on to the bumper, using the hardware and procedures recommended for your winch.
- 9. With the help of a friend, lift the bumper and install it onto the frame, being careful to position the winch cable leads correctly for routing later. There are eight (8) threaded studs located on the inside of the bumper, which will correspond with the bumper mounting holes on the frame. It may be a tight fit due to slight manufacturing variances from Jeep to Jeep, but the bumper will fit with some gentle persuasion. You may need to use a rubber mallet or soft dead-blow hammer to tap the bumper into place. Be careful not to mar the powdercoat finish.



FIG. 1

- 10. Locate the 1/2-13 nylon insert lock nuts and 1/2" flat washers that came with your bumper. Thread a washer and nut onto each of the eight mounting studs. Snug these with the 3/4" deep socket, extension and ratchet. Torque these nuts to 70 ft.-lbs.



FIG. 1

11. If you installed the OE fog lamps into the bumper, plug the harness connectors back into lamps. Use the factory wire harness push-in retainers to secure the harness to the three holes on a flange at the rear bumper.
12. If a winch was installed, finish routing the winch power cables and making electrical connections according to the winch manufacturer's recommendations.
13. Re-connect the negative battery cable and use the 10mm wrench to tighten the terminal.
14. If installing the ICON Impact PRO Series Front Bumper Skid, continue with the instructions that came with the skid.
15. **VERIFY ALL FASTENERS ARE PROPERLY TORQUED BEFORE DRIVING VEHICLE.**

Congratulations! Your installation is complete.

RETORQUE ALL NUTS, BOLTS AND LUGS AFTER 100 MILES AND PERIODICALLY THEREAFTER.



LIMITED LIFETIME WARRANTY

ICON Vehicle Dynamics warrants to the original retail purchaser who owns the vehicle on which the product was originally installed. ICON Vehicle Dynamics does not warrant the product for finish, alterations, modifications and/or installation contrary to ICON Vehicle Dynamics instructions. ICON Vehicle Dynamics products are not designed, nor are they intended to be installed on vehicles used in race applications, for racing purposes or for similar activities. (A "race" is defined as any contest between two or more vehicles, or a contest of one or more vehicles against the clock, whether or not such contest is for a prize). This warranty does not include coverage for police or taxi vehicles, race vehicles, or vehicles used for government or commercial purposes. Also excluded from this warranty are sales outside of the United States of America and Canada.

ICON Vehicle Dynamics' obligation under this warranty is limited to the repair or replacement, at ICON Vehicle Dynamics' discretion, of the defective product. Any and all costs of removal, installation or re-installation, freight charges and incidental or consequential damages are expressly excluded from this warranty. Items that are subject to wear are not considered defective when worn and are not covered.

ICON Vehicle Dynamics components must be installed as a complete kit as shown in our current application guide. Any substitutions or exemptions of required components will immediately void the warranty. Some finish damage may happen to parts during shipping and is not covered under warranty.

This warranty is expressly in lieu of all other warranties expressed or implied. This warranty shall not apply to any product that has been improperly installed, modified or customized subject to accident, negligence, abuse or misuse.



ICON VEHICLE DYNAMICS®
PERFORMANCE SUSPENSION SYSTEMS AND SHOCK ABSORBERS

7929 Lincoln Ave. Riverside, CA 92504
Phone: 951.689.ICON Fax: 951.689.1016
www.iconvehicledynamics.com



FOLLOW US ON FACEBOOK!

